

**USDA Farm 4058 Tract 9257**

2019 Certification map prepared on: 11/8/2018

Administered by: Clay County, Indiana

CRP

TRS: 10N6W23



CLU

Owen Co., IN

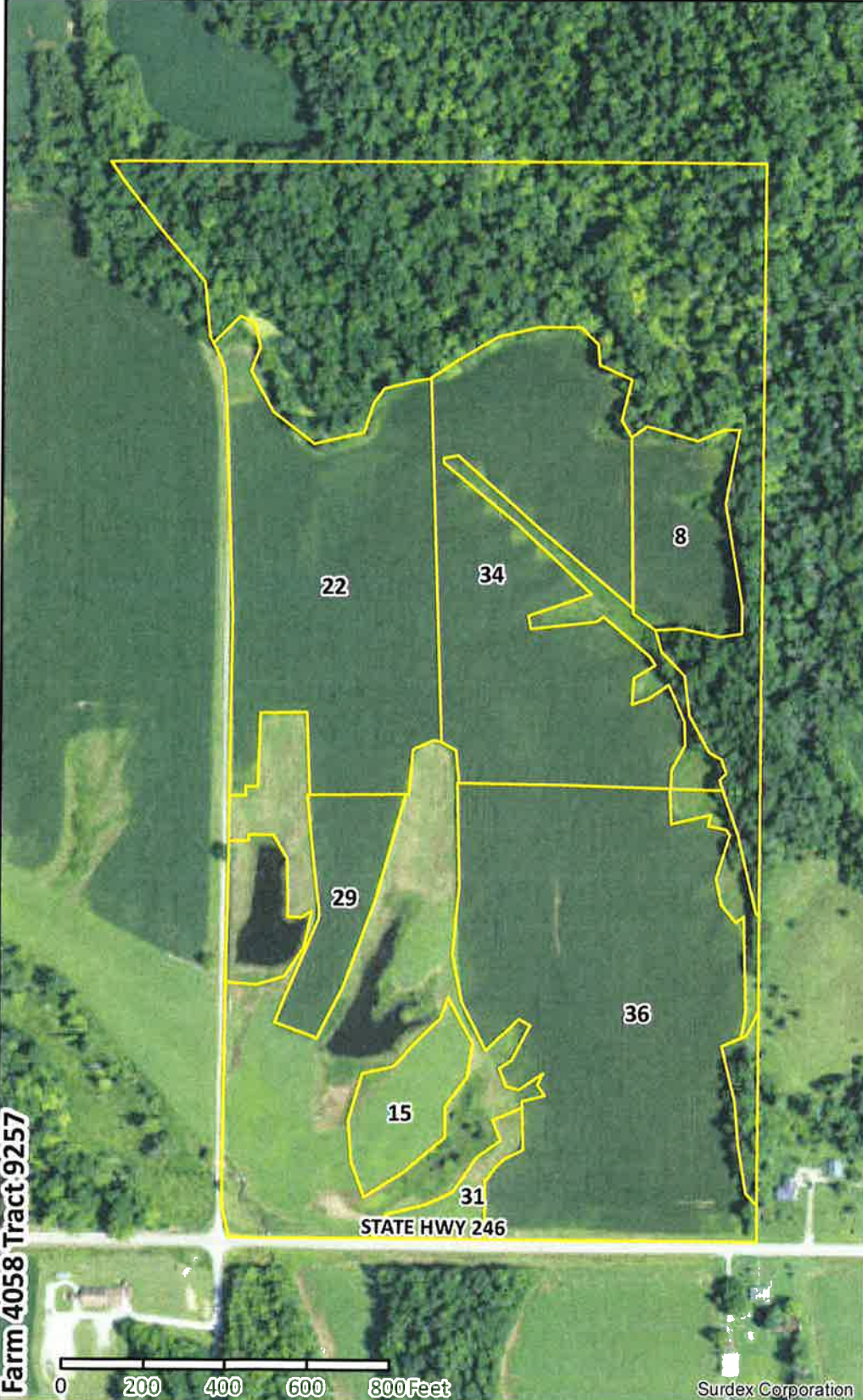
80.77 Tract acres  
45.41 Cropland acres  
0 CRP acres

**Wetland Determination Identifiers:**

- Restricted Use
- ▽ Limited Restrictions
- Exempt from Conservation Compliance Provisions

Source: Primarily USDA NAIP 2018 imagery; IDHS or Dynamap roads; FSA data 2018-11-07 15:32:36

CLU	Acres	HEL	LC	Contract	Prac	Yr	C	I
8	2.8	H	2					Y
15	1.75	H	2					Y
22	10.5	N	2					Y
29	2.05	H	2					Y
31	0.85	H	2					Y
34	11.71	H	2					Y
36	15.75	H	2					Y



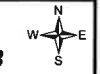
USDA FSA maps are for FSA program administration only. This map does not represent a legal survey or reflect actual ownership; rather it depicts information provided directly from the producer and/or NAIP imagery. The producer accepts the data 'as is' and assumes all risks associated with its use. The USDA Farm Service Agency assumes no responsibility for actual or consequential damage incurred as a result of any user's reliance on this data outside FSA programs. Wetland identifiers do not represent the size, shape, or specific determination of the area. Refer to your original determination (CPA-026 and attached maps) for exact boundaries and determinations or contact NRCS

**USDA Farm 4058 Tract 9256**  
Administered by: Clay County, Indiana

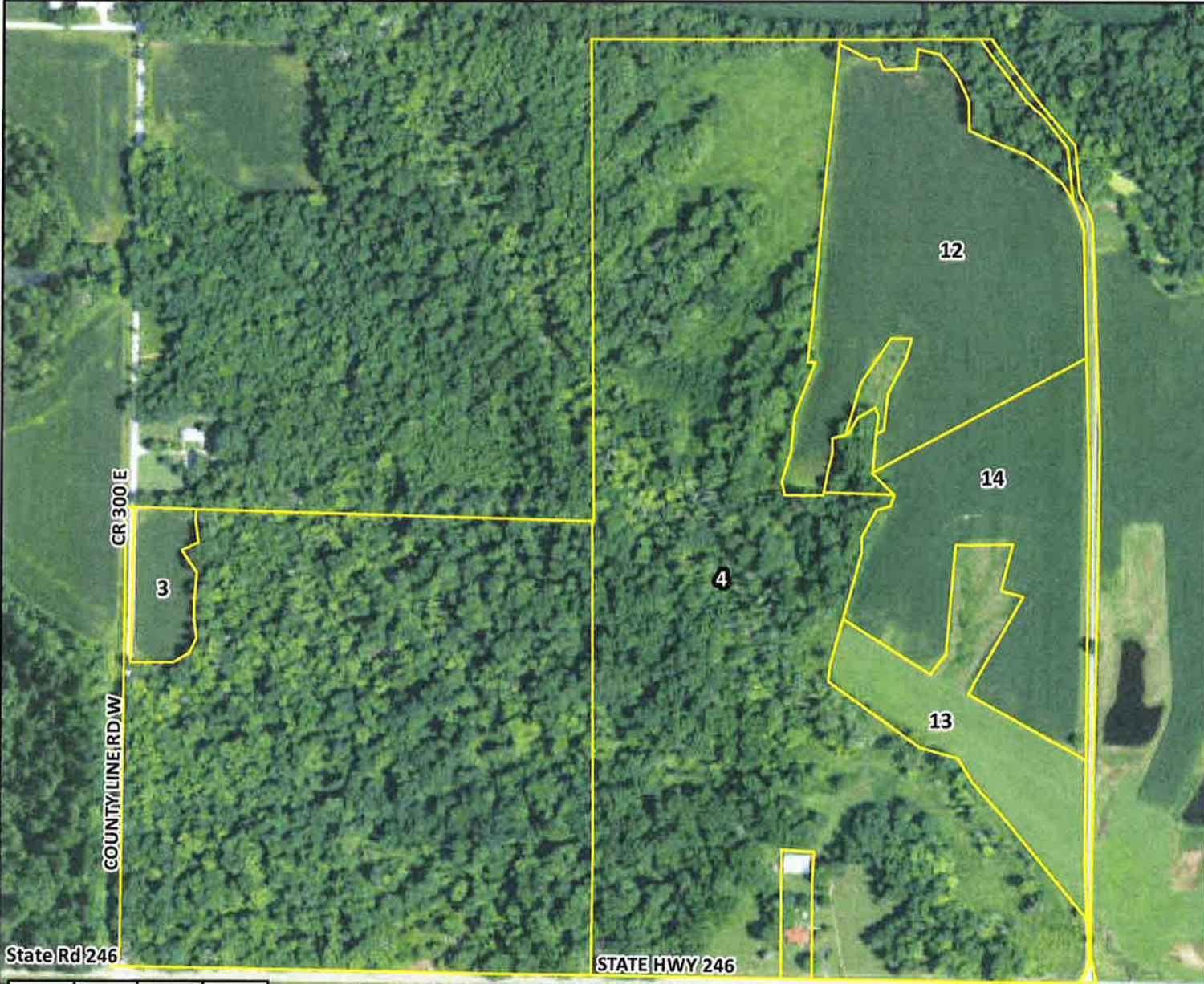
2019 Certification map prepared on: 11/8/2018  
121.16 Tract acres  
32.15 Cropland acres  
0 CRP acres

- CRP
- CLU

**Wetland Determination Identifiers:**  
● Restricted Use **TRS: 10N6W23**  
▼ Limited Restrictions **Owen Co., IN**  
■ Exempt from Conservation Compliance Provisions



Source: Primarily USDA NAIP 2018 imagery; IDHS or Dynamap roads; FSA data 2018-11-07 15:32:36



CLU	Acres	HEL	LC	Contract	Prac	Yr	C	I
3	1.67	H	2					Y
4	47.68	U	2					N
12	14.91	H	2					Y
13	5.68	H	2					Y
14	9.89	H	2					Y

0 180 360 540 720 Feet Surdex Corporation

USDA FSA maps are for FSA program administration only. This map does not represent a legal survey or reflect actual ownership; rather it depicts information provided directly from the producer and/or NAIP imagery. The producer accepts the data 'as is' and assumes all risks associated with its use. The USDA Farm Service Agency assumes no responsibility for actual or consequential damage incurred as a result of any user's reliance on this data outside FSA programs. Wetland identifiers do not represent the size, shape, or specific determination of the area. Refer to your original determination (CPA-026 and attached maps) for exact boundaries and determinations or contact NRCS.