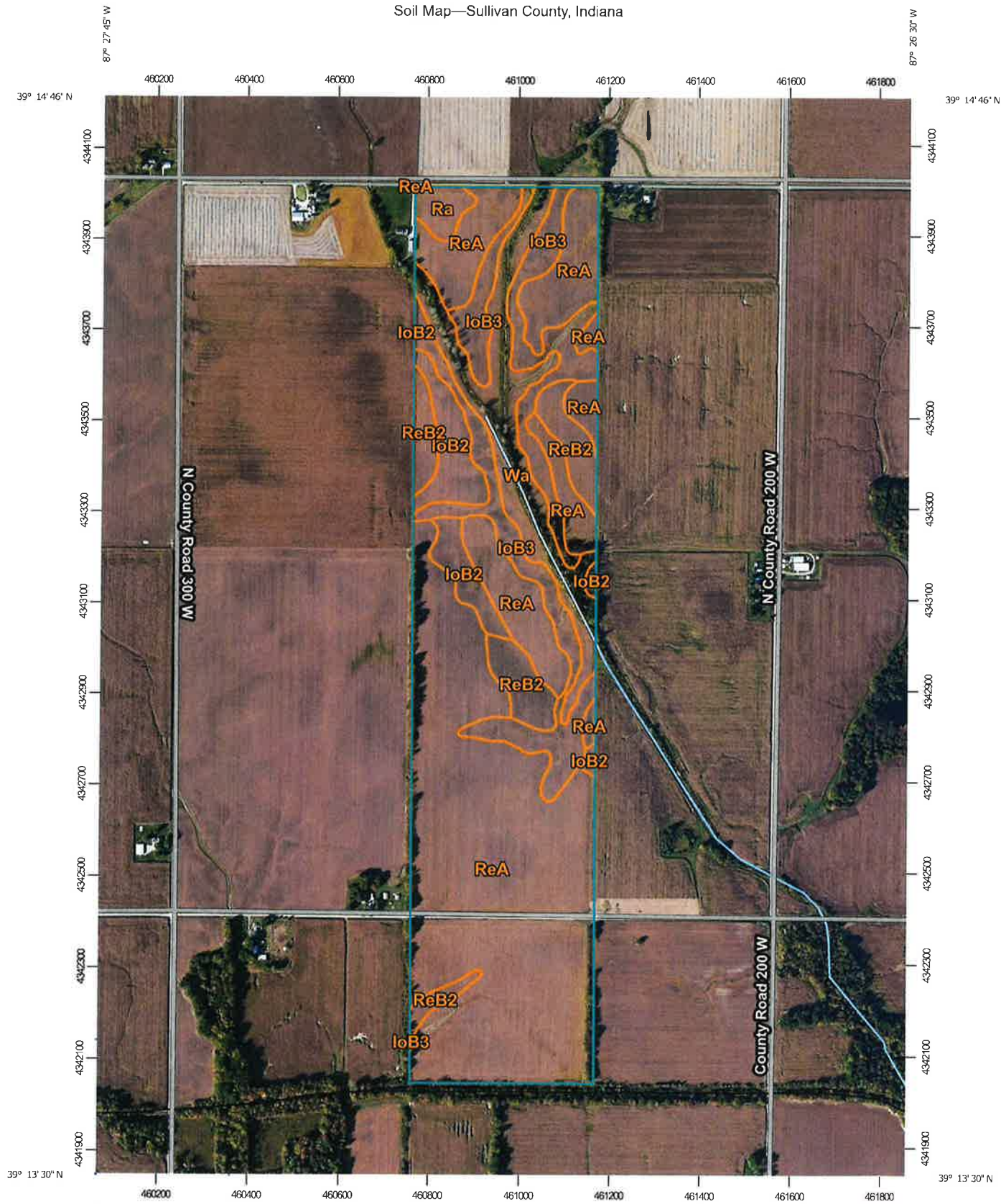


Soil Map—Sullivan County, Indiana



Map Scale: 1:11,500 if printed on A portrait (8.5" x 11") sheet.



Map projection: Web Mercator Corner coordinates: WGS84 Edge tics: UTM Zone 16N WGS84



Natural Resources Conservation Service

Web Soil Survey National Cooperative Soil Survey

8/19/2020 Page 1 of 3

Map Unit Legend

Map Unit Symbol	Map Unit Name	Acres in AOI	Percent of AOI
loB2	Iona silt loam, 2 to 6 percent slopes, eroded	11.3	5.7%
loB3	Iona silt loam, 2 to 6 percent slopes, severely eroded	30.7	15.5%
Ra	Ragsdale silt loam	2.8	1.4%
ReA	Reesville silt loam, 0 to 2 percent slopes	118.2	59.8%
ReB2	Reesville silt loam, 2 to 5 percent slopes, eroded	13.0	6.6%
Wa	Wakeland silt loam, 0 to 2 percent slopes, frequently flooded	21.6	10.9%
Totals for Area of Interest		197.6	100.0%