

Beacon™ Vigo County, IN / City of Terre Haute

Summary - Assessor's Office

Parcel ID 84-09-10-426-003.000-004
 Tax ID 103-09-10-426-003
 Section Plat 10
 Routing Number
 Neighborhood 1021035 - HONEY CREEK
 Property Address 1623 E Springhill Dr
 Terre Haute, IN 47802
 Legal Description IN W 1/2 NE SE D-443/806 & D-443/3700 10-11-9 1.780 AC
 (Note: Not to be used on legal documents)
 Acreage 1.78
 Class 501 - Res Vacant unplatted 0-9.99ac
 Tax District/Area 004 - HONEY CREEK

[View Map](#)



Owner - Auditor's Office

Deeded Owner
[Princeton Mining CO Inc.](#)
 650 S STATE ROAD 46
 TERRE HAUTE, IN 47803

Site Description - Assessor's Office

Topography Level
 Public Utilities
 Street or Road Paved
 Neigh. Life Cycle Static
 Legal Acres 1.78
 Legal Sq Ft 0

Land - Assessor's Office

Land Type	Soil ID	Actual Front	Acreage	Effect. Front	Effect. Depth	Prod Factor	Depth Factor	Meas Sq Ft	Base Rate	Adj Rate	Extended Value	Influ. Factor	Value
HOMESITE			1.000			1.00	1.00		19,383.00	19,383.00	19,380.00	2 -30% L 6%	14,730.00
HOMESITE			0.780			1.00	1.21		19,383.00	23,453.00	18,290.00	2 -30% L 6%	13,900.00

Land Detail Value Sum 28,630.00

Transfer History - Assessor's Office

Date	Owner 1	Owner 2	Book & Page	Amount
3/11/1998	DEEP VEIN COAL CO		443/806	\$280,000

Valuation - Assessor's Office

Assessment Year		01/01/2019	01/01/2018	01/01/2017	01/01/2016	03/01/2015
Reason for Change		ANN ADJ	ANN ADJ	ANN ADJ	ANN ADJ	ANN ADJ
VALUATION (Assessed Value)	Land	\$28,600	\$27,500	\$27,100	\$26,400	\$26,400
	Improvements	\$0	\$0	\$0	\$0	\$0
	Total	\$28,600	\$27,500	\$27,100	\$26,400	\$26,400
VALUATION (True Tax Value)	Land	\$28,600	\$27,500	\$27,100	\$26,400	\$26,400
	Improvements	\$0	\$0	\$0	\$0	\$0
	Total	\$28,600	\$27,500	\$27,100	\$26,400	\$26,400

Charges (2012-2018) - Auditor's Office

Delinquent payments made after the fall due date will still show due in the year they were originally assessed. If paid, payment will show in the next tax year.

Detail:

Tax Year	Type	Category	Description	Amount	Bal Due
2018 Pay 2019	Property Tax Detail	Tax	1st Installment Tax	\$333.89	\$0.00

2018 Pay 2019	Special Assessment Detail	Tax	HONEY CREEK CONSERVANCY 1st Installment Tax	\$17.50	\$0.00
2018 Pay 2019	Property Tax Detail	Tax	2nd Installment Tax	\$333.89	\$0.00
2018 Pay 2019	Special Assessment Detail	Tax	HONEY CREEK CONSERVANCY 2nd Installment Tax	\$17.50	\$0.00
2017 Pay 2018	Property Tax Detail	Tax	1st Installment Tax	\$320.73	
2017 Pay 2018	Special Assessment Detail	Tax	HONEY CREEK CONSERVANCY 1st Installment Tax	\$31.60	
2017 Pay 2018	Property Tax Detail	Tax	2nd Installment Tax	\$320.73	
2017 Pay 2018	Special Assessment Detail	Tax	HONEY CREEK CONSERVANCY 2nd Installment Tax	\$31.60	
2016 Pay 2017	Property Tax Detail	Tax	1st Installment Tax	\$335.48	
2016 Pay 2017	Special Assessment Detail	Tax	HONEY CREEK CONSERVANCY 1st Installment Tax	\$31.02	
2016 Pay 2017	Property Tax Detail	Tax	2nd Installment Tax	\$335.48	
2016 Pay 2017	Special Assessment Detail	Tax	HONEY CREEK CONSERVANCY 2nd Installment Tax	\$31.02	
2015 Pay 2016	Property Tax Detail	Tax	1st Installment Tax	\$327.95	
2015 Pay 2016	Special Assessment Detail	Tax	HONEY CREEK CONSERVANCY 1st Installment Tax	\$29.20	
2015 Pay 2016	Property Tax Detail	Tax	2nd Installment Tax	\$327.95	
2015 Pay 2016	Special Assessment Detail	Tax	HONEY CREEK CONSERVANCY 2nd Installment Tax	\$29.20	
2014 Pay 2015	Property Tax Detail	Tax	1st Installment Tax	\$1,940.00	
2014 Pay 2015	Special Assessment Detail	Tax	HONEY CREEK CONSERVANCY 1st Installment Tax	\$222.03	
2014 Pay 2015	Property Tax Detail	Tax	2nd Installment Tax	\$1,940.00	
2014 Pay 2015	Special Assessment Detail	Tax	HONEY CREEK CONSERVANCY 2nd Installment Tax	\$222.03	
2013 Pay 2014	Property Tax Detail	Tax	1st Installment Tax	\$1,920.00	
2013 Pay 2014	Special Assessment Detail	Tax	HONEY CREEK CONSERVANCY 1st Installment Tax	\$127.39	
2013 Pay 2014	Property Tax Detail	Tax	2nd Installment Tax	\$1,920.00	
2013 Pay 2014	Special Assessment Detail	Tax	HONEY CREEK CONSERVANCY 2nd Installment Tax	\$127.39	
2012 Pay 2013	Property Tax Detail	Tax	1st Installment Tax	\$1,898.00	
2012 Pay 2013	Special Assessment Detail	Tax	HONEY CREEK CONSERVANCY 1st Installment Tax	\$125.93	
2012 Pay 2013	Property Tax Detail	Tax	2nd Installment Tax	\$1,898.00	
2012 Pay 2013	Special Assessment Detail	Tax	HONEY CREEK CONSERVANCY 2nd Installment Tax	\$125.93	
2011 Pay 2012	Special Assessment Detail	Tax	HONEY CREEK CONSERVANCY 1st Installment Tax	\$186.38	
2011 Pay 2012	Special Assessment Detail	Tax	HONEY CREEK CONSERVANCY 2nd Installment Tax	\$186.38	

Total:

Tax Year	Amount	Bal Due
2018 Pay 2019	\$702.78	\$0.00
2017 Pay 2018	\$704.66	
2016 Pay 2017	\$733.00	
2015 Pay 2016	\$714.30	
2014 Pay 2015	\$4,324.06	
2013 Pay 2014	\$4,094.78	
2012 Pay 2013	\$4,047.86	
2011 Pay 2012	\$372.76	

Photos - Assessor's Office



Map



No data available for the following modules: Farm Land Computations - Assessor's Office, Residential Dwellings - Assessor's Office, Improvements - Assessor's Office, Transfer Recording - Auditor's Office, Homestead Allocations - Assessor's Office, Deductions - Auditor's Office, Payments (2010-2018) - Treasurer's Office, Exemptions - Auditor's Office, Sketches - Assessor's Office.

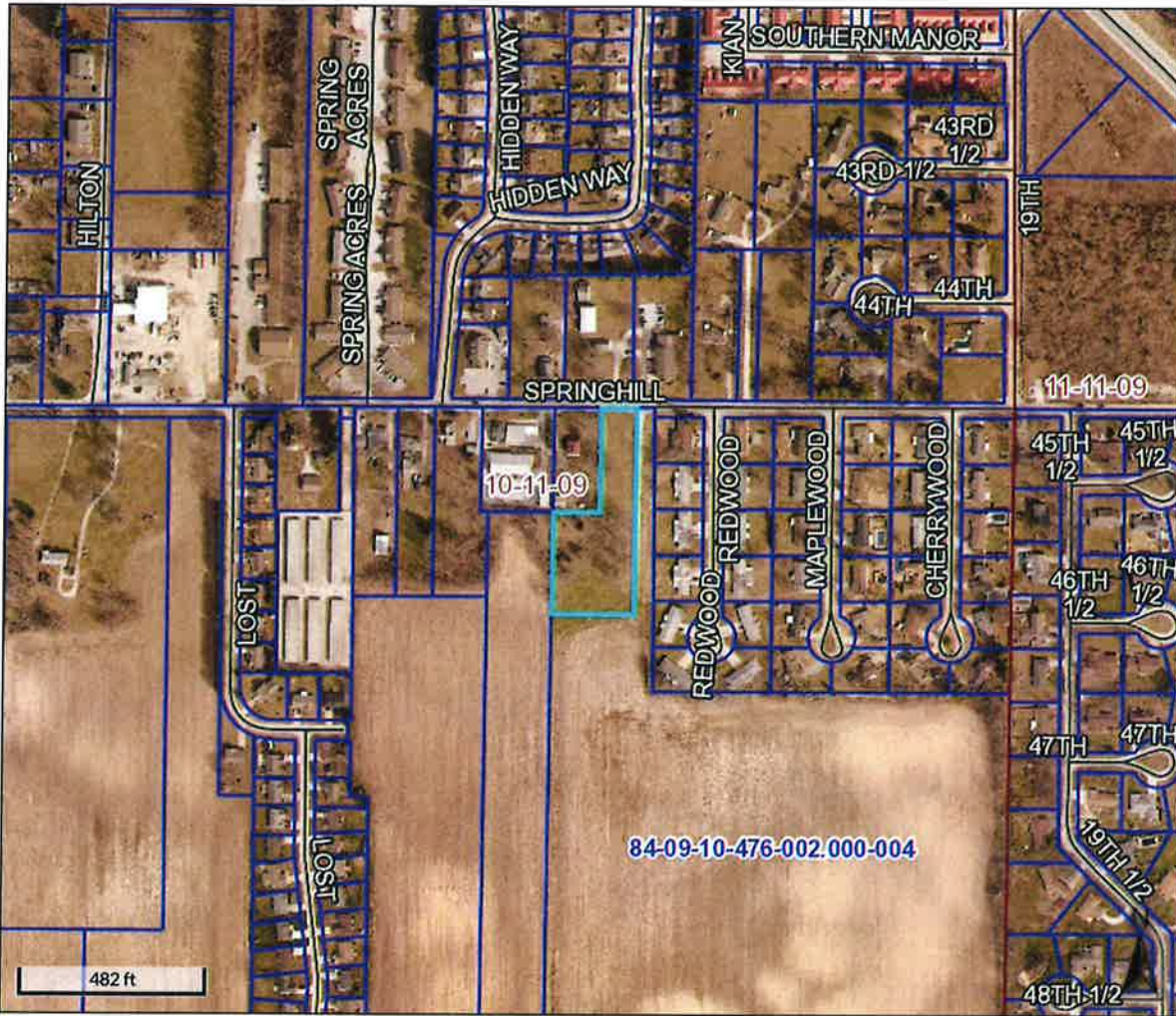
The information in this web site represents current data from a working file which is updated continuously. Information is believed reliable, but its accuracy cannot be guaranteed. No warranty, expressed or implied, is provided for the data herein, or its use.

[User Privacy Policy](#)
[GDPR Privacy Notice](#)



[Last Data Upload: 2/19/2020, 8:39:48 PM](#)

[Version 2.3.41](#)



Overview



Legend

- Corporate Limits
- Political Township
- Sections
- Blocks
- Parcels
- Road Centerlines
- 2019 Sales

Parcel ID	84-09-10-426-003.000-004	Alternate ID	103-09-10-426-003	Owner Address	PRINCETON MINING CO INC
Sec/Twp/Rng	10	Class	Res Vacant unplatted 0-9.99ac		650 S STATE ROAD 46
Property Address	1617 E SPRINGHILL DR	Acreage	1.78		TERRE HAUTE, IN 47803
	TERRE HAUTE				
Neighborhood	1021035 - HONEY CREEK				
District	004 HONEY CREEK				
Brief Tax Description	IN W 1/2 NE SE				
	D-443/806 & D-443/3700 10-11-9 1.780 AC				
	<i>(Note: Not to be used on legal documents)</i>				

Date created: 2/20/2020
 Last Data Uploaded: 2/19/2020 8:39:48 PM

Developed by Schneider
 GEOSPATIAL