



CLU	Acres	HEL	Contract	Prac	Yr	C
1	30.94	N				Y
2	24.81	N				Y

CLU	Acres	HEL	Contract	Prac	Yr	C
1	36.1	N				Y
2	5.15	N				Y
3	1.93	H				Y

**USDA Farm 4191 Tract 29304**

Map prepared on: 1/5/2017

Administered by: Sullivan County, Indiana

□ CRP

▭ CLU

*Sullivan Co., IN*



51.46 Tract acres

43.18 Cropland acres

0 CRP acres

**Wetland Determination Identifiers:**

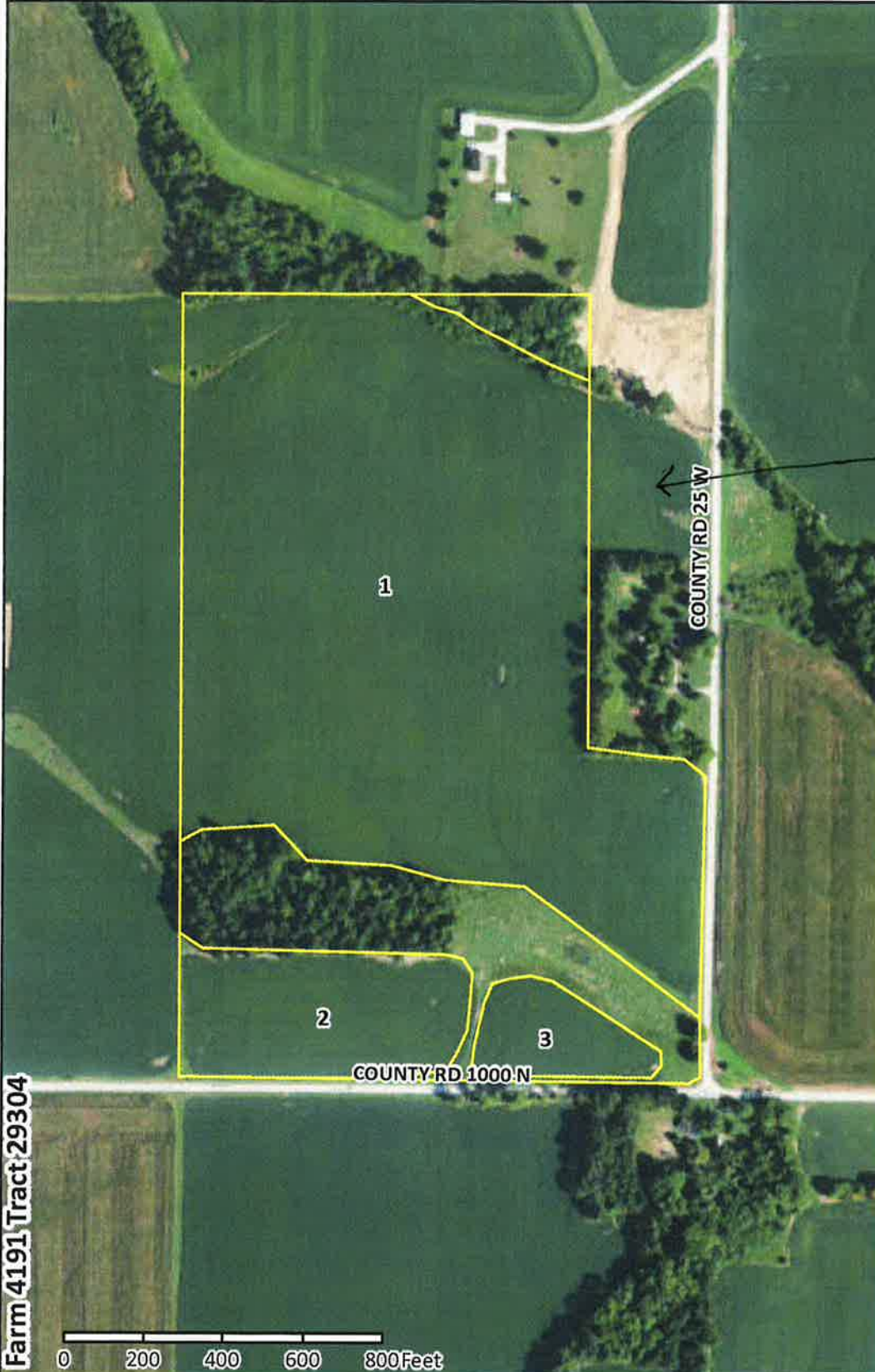
● Restricted Use

▽ Limited Restrictions

■ Exempt from Conservation Compliance Provisions

Source: Primarily USDA FSA 2016 imagery (2015 IL & OH); IDHS or Dynamap road names.

CLU	Acres	HEL	Contract	Prac	Yr	C	I
1	36.1	N					Y
2	5.15	N					Y
3	1.93	H					Y



*Plus 2.44  
acres.  
J. Walls*

Farm 4191 Tract 29304

USDA FSA maps are for FSA program administration only. This map does not represent a legal survey or reflect actual ownership; rather it depicts information provided directly from the producer and/or NAIP imagery. The producer accepts the data 'as is' and assumes all risks associated with its use. The USDA Farm Service Agency assumes no responsibility for actual or consequential damage incurred as a result of any user's reliance on this data outside FSA programs. Wetland identifiers do not represent the size, shape, or specific determination of the area. Refer to your original determination (CPA-026 and attached maps) for exact boundaries and determinations or contact NRCS.



**USDA Farm 4191 Tract 406**

Map prepared on: 1/5/2017

Administered by: Sullivan County, Indiana

CRP

CLU

**Sullivan Co., IN**



59.36 Tract acres

55.75 Cropland acres

0 CRP acres

**Wetland Determination Identifiers:**

● Restricted Use

▽ Limited Restrictions

■ Exempt from Conservation Compliance Provisions

Source: Primarily USDA FSA 2016 imagery (2015 IL & OH); IDHS or Dynamap road names.

CLU	Acres	HEL	Contract	Prac	Yr	C	I
1	30.94	N					Y
2	24.81	N					Y



Farm 4191 Tract 406

USDA FSA maps are for FSA program administration only. This map does not represent a legal survey or reflect actual ownership; rather it depicts information provided directly from the producer and/or NAIP imagery. The producer accepts the data 'as is' and assumes all risks associated with its use. The USDA Farm Service Agency assumes no responsibility for actual or consequential damage incurred as a result of any user's reliance on this data outside FSA programs. Wetland identifiers do not represent the size, shape, or specific determination of the area. Refer to your original determination (CPA-026 and attached maps) for exact boundaries and determinations or contact NRCS.