

 **Beacon™** Vigo County, IN / City of Terre Haute

Summary - Assessor's Office

Parcel ID 84-06-10-434-004.000-002
Tax ID 118-06-10-434-004
Section Plat 10
Routing Number
Neighborhood 118511 - HARRISON
Property Address 2521 N 17th St
 Terre Haute, IN 47804
Legal Description HIGHLAND PLACE (2521 N 17TH ST) 20019721 10-12-9 LOT 73
 (Note: Not to be used on legal documents)
Acreage N/A
Class 510 - Res 1 fam dwelling platted lot
Tax District/Area 002 - HARRISON

[View Map](#)



Owner - Auditor's Office

Deeded Owner
 Clark Robert T & Robert R & Ruth E Jt / Rs
 2521 N 17TH ST
 TERRE HAUTE, IN 47804

Site Description - Assessor's Office

Topography Level
Public Utilities
Street or Road
Neigh. Life Cycle
Legal Acres 0
Legal Sq Ft 0

Land - Assessor's Office

Land Type	Soil ID	Actual Front	Acreage	Effect. Front	Effect. Depth	Prod Factor	Depth Factor	Meas Sq Ft	Base Rate	Adj Rate	Extended Value	Influ. Factor	Value
FRONT		40.000	0.000	40.000	130.000	0.00	0.99		158.00	156.42	6,260.00	L 2%	6,390.00
LOT													

Land Detail Value Sum 6,390.00

Residential Dwellings - Assessor's Office

Label			
Card 01			
Residential Dwelling 1			
Occupancy			
Story Height	1.0		
Roofing	Material: Asphalt shingles		
Attic	None		
Basement Type	None		
Basement Rec Room	None		
Finished Rooms	4		
Bedrooms	3		
Family Rooms	0		
Dining Rooms	0		
Full Baths	1; 3-Fixt.		
Half Baths	0; 0-Fixt.		
4 Fixture Baths	0; 0-Fixt.		
5 Fixture Baths	0; 0-Fixt.		
Kitchen Sinks	1; 1-Fixt.		
Water Heaters	1; 1-Fixt.		
Central Air	Yes		
Primary Heat	Central Warm Air		
Extra Fixtures	0		
Total Fixtures	5		
Fireplace	No		
Features	None		
Porches and Decks	Open Frame Porch 120		
Yd Item/Spc Fture/Outbldg	WOOD FRAME UTILITY SHED 64 SF		
Last Updated	3/31/2003		
Construction	Floor	Base Area (sf)	Fin. Area (sf)
Wood frame	1.0	960	960
	Crawl	960	0

Improvements - Assessor's Office

Card 01

ID	Use	Stry Hgt	Const Type	Grade	Year Const	Eff Year	Cond	Base Rate	Features	Adj Rate	Size/ Area	Comp Value	Phys Depr	Obsol Depr	Mrkt Adj	% Comp	Value
D	DWELL	1		D	1995	1995	AV	0.00		0	960	62280	26	0	103	100	47000
01	UTLSHED		WOOD FRAME	D	1995	1995	F	22.23		16.54	8 x 8	1060	60	0	103	100	400

Transfer History - Assessor's Office

Date	Owner 1	Owner 2	Book & Page	Amount
6/1/2001	E TWINS LLC		2001/9721	\$44,000.00
6/1/2001	MEASEL NANCY & KAY T LEACH TC		2001/9722	\$0.00
2/26/2001	SECRETARY OF HOUSING & URBAN		2001/2588	\$20,500.00
4/20/2000	HARRIS WILLIAM R/COWAN WILLIAM D &		445/2653	\$0.00
4/20/2000	PRINCIPAL RESIDENTIAL MORTGAGE		445/2654	\$0.00
5/1/1998	ISLES JERY JEROME		443/1511	\$41,900.00
6/10/1995	HUBER JOSEPH G & CATHLEEN D		440/2024	\$0.00
5/11/1992	EWING DEMETRIUS & MARY COX		432/65	\$0.00
9/6/1978	EWING JAMES H & DAISY		375/653-1	\$0.00

Valuation - Assessor's Office

Assessment Year		01/01/2017	01/01/2016	03/01/2015	03/01/2014	03/01/2013
Reason for Change		ANN ADJ	ANN ADJ	ANN ADJ	ANN ADJ	ANN ADJ
VALUATION	Land	\$6,400	\$6,400	\$6,300	\$6,300	\$6,200
(Assessed Value)	Improvements	\$47,400	\$47,400	\$46,700	\$48,200	\$47,900
	Total	\$53,800	\$53,800	\$53,000	\$54,500	\$54,100
VALUATION	Land	\$6,400	\$6,400	\$6,300	\$6,300	\$6,200
(True Tax Value)	Improvements	\$47,400	\$47,400	\$46,700	\$48,200	\$47,900
	Total	\$53,800	\$53,800	\$53,000	\$54,500	\$54,100

Deductions - Auditor's Office

Tax Year	Deduction Type	Amount
2017 Pay 2018	Mortgage	\$3,000.00
2017 Pay 2018	Homestead - Supplemental	\$7,476.00
2017 Pay 2018	Homestead Credit/ Standard	\$32,040.00
2016 Pay 2017	Mortgage	\$3,000.00
2016 Pay 2017	Homestead - Supplemental	\$7,476.00

Tax Year	Deduction Type	Amount
2016 Pay 2017	Homestead Credit/ Standard	\$32,040.00
2015 Pay 2016	Mortgage	\$3,000.00
2015 Pay 2016	Homestead - Supplemental	\$7,350.00
2015 Pay 2016	Homestead Credit/ Standard	\$31,500.00
2014 Pay 2015	Mortgage	\$3,000.00
2014 Pay 2015	Homestead - Supplemental	\$7,574.00
2014 Pay 2015	Homestead Credit/ Standard	\$32,460.00
2013 Pay 2014	Mortgage	\$3,000.00
2013 Pay 2014	Homestead - Supplemental	\$7,518.00
2013 Pay 2014	Homestead Credit/ Standard	\$32,220.00
2012 Pay 2013	Mortgage	\$3,000.00
2012 Pay 2013	Homestead - Supplemental	\$7,462.00
2012 Pay 2013	Homestead Credit/ Standard	\$31,980.00
2011 Pay 2012	Mortgage	\$3,000.00
2011 Pay 2012	Homestead - Supplemental	\$8,932.00
2011 Pay 2012	Homestead Credit/ Standard	\$38,280.00
2010 Pay 2011	Mortgage	\$3,000.00
2010 Pay 2011	Homestead - Supplemental	\$8,792.00
2010 Pay 2011	Homestead Credit/ Standard	\$37,680.00
2009 Pay 2010	Mortgage	\$3,000.00
2009 Pay 2010	Homestead - Supplemental	\$9,002.00
2009 Pay 2010	Homestead Credit/ Standard	\$38,580.00
2008 Pay 2009	Mortgage	\$3,000.00
2008 Pay 2009	Homestead - Supplemental	\$9,072.00
2008 Pay 2009	Homestead Credit/ Standard	\$38,880.00
2007 Pay 2008	Mortgage	\$3,000.00
2007 Pay 2008	Homestead Credit/ Standard	\$30,000.00
2006 Pay 2007	Mortgage	\$3,000.00
2006 Pay 2007	Homestead Credit/ Standard	\$27,900.00

Charges (2012-2017) - Auditor's Office

Delinquent payments made after the fall due date will still show due in the year they were originally assessed. If paid, payment will show in the next tax year.

Detail:

Tax Year	Type	Category	Description	Amount	Bal Due
2017 Pay 2018	Property Tax Detail	Tax	1st Installment Tax	\$230.87	\$0.00
2017 Pay 2018	Property Tax Detail	Tax	2nd Installment Tax	\$230.87	\$230.87
2016 Pay 2017	Property Tax Detail	Tax	1st Installment Tax	\$241.36	
2016 Pay 2017	Property Tax Detail	Tax	2nd Installment Tax	\$241.36	
2015 Pay 2016	Property Tax Detail	Tax	1st Installment Tax	\$231.95	
2015 Pay 2016	Property Tax Detail	Tax	2nd Installment Tax	\$231.95	
2014 Pay 2015	Property Tax Detail	Tax	1st Installment Tax	\$235.32	
2014 Pay 2015	Property Tax Detail	Tax	2nd Installment Tax	\$235.32	
2013 Pay 2014	Property Tax Detail	Tax	1st Installment Tax	\$231.93	
2013 Pay 2014	Property Tax Detail	Tax	2nd Installment Tax	\$231.93	
2012 Pay 2013	Property Tax Detail	Tax	1st Installment Tax	\$223.94	
2012 Pay 2013	Property Tax Detail	Tax	2nd Installment Tax	\$223.94	
2011 Pay 2012	Property Tax Detail	Tax	1st Installment Tax	\$266.71	
2011 Pay 2012	Property Tax Detail	Tax	2nd Installment Tax	\$266.71	

Total:

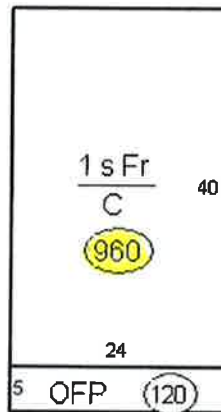
Tax Year	Amount	Bal Due
2017 Pay 2018	\$461.74	\$230.87
2016 Pay 2017	\$482.72	
2015 Pay 2016	\$463.90	
2014 Pay 2015	\$470.64	
2013 Pay 2014	\$463.86	
2012 Pay 2013	\$447.88	
2011 Pay 2012	\$533.42	

Photos - Assessor's Office

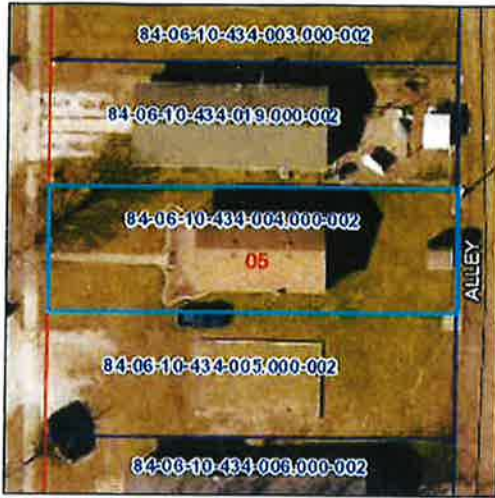


Sketches - Assessor's Office

Utili Shed (64)



Map



No data available for the following modules: Farm Land Computations - Assessor's Office, Transfer Recording - Auditor's Office, Homestead Allocations - Assessor's Office, Payments (2010-2016) - Treasurer's Office, Exemptions - Auditor's Office.

The information in this web site represents current data from a working file which is updated continuously. Information is believed reliable, but its accuracy cannot be guaranteed. No warranty, expressed or implied, is provided for the data herein, or its use.

Last Data Upload: 5/22/2018, 7:35:37 PM



Developed by
The Schneider
Corporation