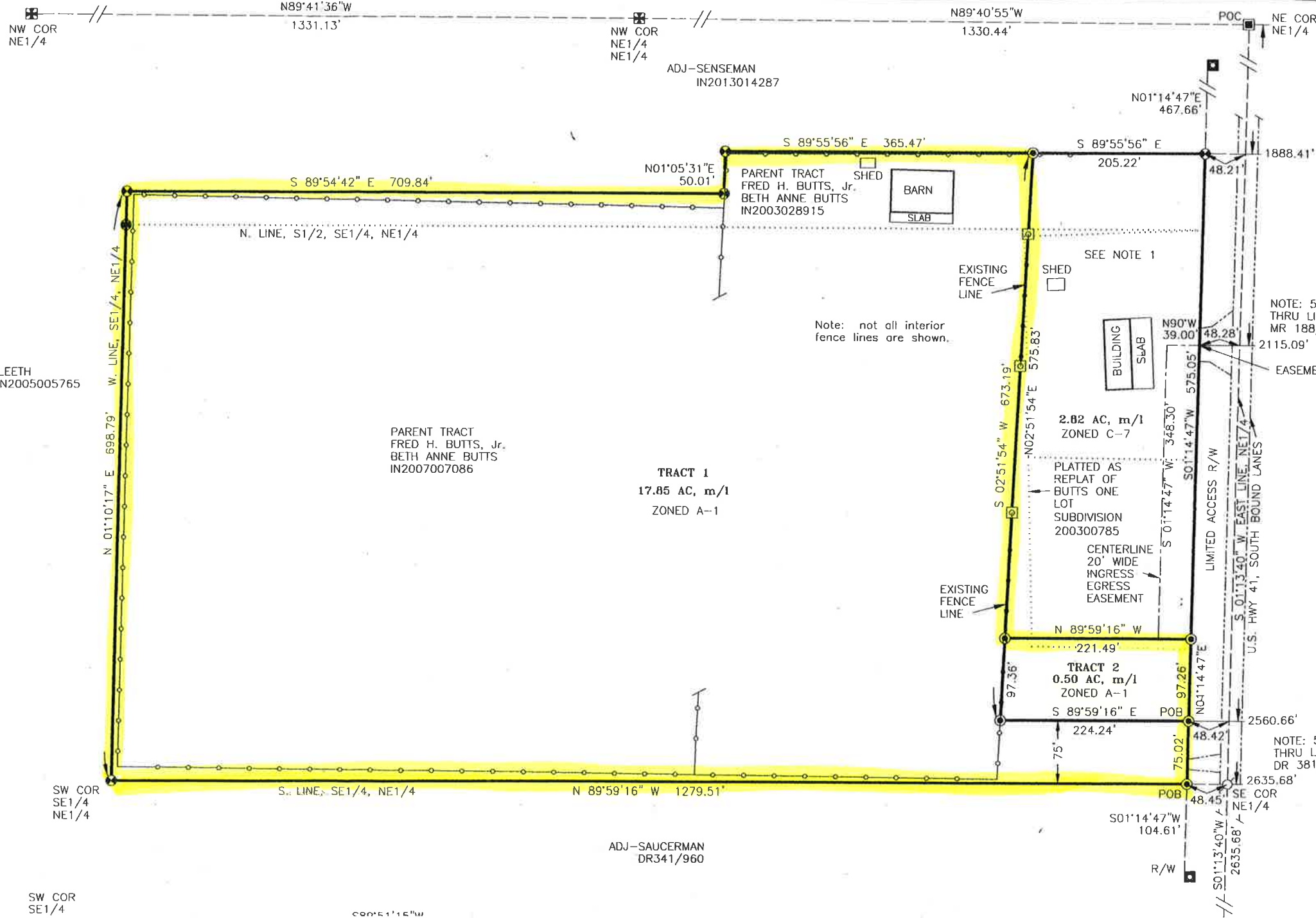


FENCE LINE
PARCEL OR LOT LINE
HIGHWAY PAVEMENT



NW COR
NE1/4

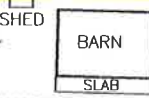
NW COR
NE1/4
NE1/4

POC
NE COR
NE1/4

ADJ-SENSEMAN
IN2013014287

S 89°54'42" E 709.84'
N. LINE, S1/2, SE1/4, NE1/4

PARENT TRACT
FRED H. BUTTS, Jr.
BETH ANNE BUTTS
IN2003028915



EXISTING
FENCE
LINE



SEE NOTE 1

Note: not all interior
fence lines are shown.



NOTE: 50
THRU LIM
MR 188/
EASEMEI

-LEETH
IN2005005765

PARENT TRACT
FRED H. BUTTS, Jr.
BETH ANNE BUTTS
IN2007007086

TRACT 1
17.85 AC, m/1
ZONED A-1

2.82 AC, m/1
ZONED C-7

PLATTED AS
REPLAT OF
BUTTS ONE
LOT
SUBDIVISION
200300785
CENTERLINE
20' WIDE
INGRESS
EGRESS
EASEMENT

LIMITED ACCESS R/W

S 01°13'40" W EAST LINE, NE1/4
U.S. HWY 41, SOUTH BOUND LANES

EXISTING
FENCE
LINE

TRACT 2
0.50 AC, m/1
ZONED A-1

NOTE: 5
THRU LI
DR 381,

SW COR
SE1/4
NE1/4

ADJ-SAUCCERMAN
DR341/960

SW COR
SE1/4