

**Beacon**TM

Vigo County, IN / City of Terre Haute

Tract 1

Summary - Assessor's Office

Parcel ID 84-10-21-209-002.000-018
Tax ID 113-10-21-209-002
Section Plat 21
Routing Number
Neighborhood 113102 - RILEY
Property Address E First Dr
Legal Description SECOR NW NE D- 393/204 21-11-8 14.850 AC
(Note: Not to be used on legal documents)
Acreage 14.85
Class 100 - Agri Vacant land
Tax District/Area 018 - RILEY

Owner - Auditor's Office

Deeded Owner
Mc Intosh Betty J
6631 LOUISVILLE RD
TERRE HAUTE, IN 47802

Site Description - Assessor's Office

Topography
Public Utilities
Street or Road
Neigh. Life Cycle
Legal Acres 14.85
Legal Sq Ft 0

Land - Assessor's Office

Land Type	Soil ID	Actual Front	Acreage	Effect. Front	Effect. Depth	Prod Factor	Depth Factor	Meas Sq Ft	Base Rate	Adj Rate	Extended Value	Influ. Factor
TILLABLE LAND	IvA		5.000			1.15			2,050.00	2,358.00	11,790.00	
NONTILLABLE LAND	St		4.850			0.50			2,050.00	1,025.00	4,970.00	0 -60%
TILLABLE LAND	AvB2		2.500			0.81			2,050.00	1,661.00	4,150.00	
TILLABLE LAND	MuB2		2.500			1.02			2,050.00	2,091.00	5,230.00	

Farm Land Computations - Assessor's Office

Parcel Acreage 14.85
81 Legal Drain NV [-] 0
82 Public Roads NV [-] 0
83 UT Towers NV [-] 0
9 Homesite(s) [-] 0
Total Acres Farmland 14.85
True Tax Value 23,160.00
Measured Acres 14.85
Average True Tax Value/Acre 1,560.00

True Tax Value Farmland	23,170.00
Classified Land Total	0
Homesite(s) Value (+)	0.00
Total Land Value	23,200.00

Valuation - Assessor's Office

Assessment Year		03/01/2014	03/01/2013	03/01/2012	03/01/2011	03/01/2010
Reason for Change		ANN ADJ	ANN ADJ	4Y Reval	ANN ADJ	ANN ADJ
VALUATION	Land	\$23,200	\$19,900	\$18,400	\$17,000	\$14,600
(Assessed Value)	Improvements	\$0	\$0	\$0	\$0	\$0
	Total	\$23,200	\$19,900	\$18,400	\$17,000	\$14,600
VALUATION	Land	\$23,200	\$19,900	\$18,400	\$17,000	\$14,600
(True Tax Value)	Improvements	\$0	\$0	\$0	\$0	\$0
	Total	\$23,200	\$19,900	\$18,400	\$17,000	\$14,600

Pay Property Taxes

[Click here to pay your Property Taxes online for this parcel](#)

Charges (2009-2015) - Auditor's Office

Delinquent payments made after the fall due date will still show due in the year they were originally assessed. If paid, payment will show in the next tax year.

Detail:

Tax Year	Type	Category	Description	Amount	Bal Due
2014 Pay 2015	Property Tax Detail	Tax	1st Installment Tax	\$232.00	\$0.00
2014 Pay 2015	Property Tax Detail	Tax	2nd Installment Tax	\$232.00	\$232.00
2013 Pay 2014	Property Tax Detail	Tax	1st Installment Tax	\$199.00	
2013 Pay 2014	Property Tax Detail	Tax	2nd Installment Tax	\$199.00	
2012 Pay 2013	Property Tax Detail	Tax	1st Installment Tax	\$184.00	
2012 Pay 2013	Property Tax Detail	Tax	2nd Installment Tax	\$184.00	
2011 Pay 2012	Property Tax Detail	Tax	1st Installment Tax	\$170.00	
2011 Pay 2012	Property Tax Detail	Tax	2nd Installment Tax	\$170.00	
2010 Pay 2011	Property Tax Detail	Tax	1st Installment Tax	\$142.25	
2010 Pay 2011	Property Tax Detail	Tax	2nd Installment Tax	\$142.25	
2009 Pay 2010	Property Tax Detail	Tax	1st Installment Tax	\$128.12	
2009 Pay 2010	Property Tax Detail	Tax	2nd Installment Tax	\$128.12	
2009 Pay 2010	Property Tax Detail	Penalty	Additional 5% Penalty	\$6.28	
2009 Pay 2010	Property Tax Detail	Tax	Last Year 2nd Installment Tax	\$125.57	
2009 Pay 2010	Property Tax Detail	Penalty	LY 2nd Installment Penalty	\$6.28	
2008 Pay 2009	Property Tax Detail	Tax	1st Installment Tax	\$125.57	
2008 Pay 2009	Property Tax Detail	Penalty	2nd Installment Penalty	\$6.28	

2008 Pay 2009	Property Tax Detail	Tax	2nd Installment Tax	\$125.57
---------------	---------------------	-----	---------------------	----------

Total:

Tax Year	Amount	Bal Due
2014 Pay 2015	\$464.00	\$232.00
2013 Pay 2014	\$398.00	
2012 Pay 2013	\$368.00	
2011 Pay 2012	\$340.00	
2010 Pay 2011	\$284.50	
2009 Pay 2010	\$394.37	
2008 Pay 2009	\$257.42	

Payments (2009-2015) - Treasurer's Office

Detail:

Tax Year	Payment Date	Paid By	Amount
2014 Pay 2015	5/21/2015	PD AT THSB 04/29/2015	\$232.00
2013 Pay 2014	11/24/2014	PAID AT THSB	\$199.00
2013 Pay 2014	5/20/2014	PAID AT THSB 5-1-14	\$199.00
2012 Pay 2013	11/22/2013	PAID AT THSB	\$184.00
2012 Pay 2013	5/16/2013	PAYMENTS AT THSB	\$184.00
2011 Pay 2012	11/16/2012	TERRE HAUTE SAVINGS BANK PAYMENT	\$170.00
2011 Pay 2012	5/23/2012	TERRE HAUTE SAVINGS BANK PAYMENT	\$170.00
2010 Pay 2011	11/5/2011	payment made at T.H. Savings Bank	\$142.25
2010 Pay 2011	4/26/2011	PAYMENT MADE @ TH SAVINGS BNK	\$142.25
2009 Pay 2010	10/26/2010	PAYMENT AT TH SAVINGS BANK	\$128.12
2009 Pay 2010	5/5/2010		\$266.25

Total:

Tax Year	Amount
2014 Pay 2015	\$232.00
2013 Pay 2014	\$398.00
2012 Pay 2013	\$368.00
2011 Pay 2012	\$340.00
2010 Pay 2011	\$284.50
2009 Pay 2010	\$394.37

Map



No data available for the following modules: Residential Dwellings - Assessor's Office, Improvements - Assessor's Office, Transfer History - Assessor's Office, Transfer Recording - Auditor's Office, Homestead Allocations - Assessor's Office, Deductions - Auditor's Office, Exemptions - Auditor's Office, Photos - Assessor's Office, Sketches - Assessor's Office.

The information in this web site represents current data from a working file which is updated continuously. Information is believed reliable, but its accuracy cannot be guaranteed. No warranty, expressed or implied, is provided for the data herein, or its use.

Last Data Upload: 6/26/2015 2:35:04 AM



Developed by
The Schneider Corporation

**Beacon**TM

Vigo County, IN / City of Terre Haute

Tract 2

McINTOSH

Summary - Assessor's Office

Parcel ID 84-10-21-276-001.000-018
 Tax ID 113-10-21-276-001
 Section Plat 21
 Routing Number
 Neighborhood 113102 - RILEY
 Property Address Louisville Rd
 Legal Description SEND W 1/2 E 1/2 NE D- 393/204 21-11-8 15.980 AC
 (Note: Not to be used on legal documents)
 Acreage 15.98
 Class 199 - Agri Other agricultural use
 Tax District/Area 018 - RILEY

**Owner - Auditor's Office**

Deeded Owner
 Mc Intosh Betty J
 6631 LOUISVILLE RD
 TERRE HAUTE, IN 47802

Site Description - Assessor's Office

Topography
 Public Utilities
 Street or Road
 Neigh. Life Cycle
 Legal Acres 15.98
 Legal Sq Ft 0

Land - Assessor's Office

Land Type	Soil ID	Actual Front	Acreage	Effect. Front	Effect. Depth	Prod Factor	Depth Factor	Meas Sq Ft	Base Rate	Adj Rate	Extended Value	Influ. Factor
TILLABLE LAND	St		14.980			0.50			2,050.00	1,025.00	15,350.00	
FARM BUILDINGS	ST		1.000			0.50			2,050.00	1,025.00	1,030.00	0 -40%

Farm Land Computations - Assessor's Office

Parcel Acreage 15.98
 81 Legal Drain NV [-] 0
 82 Public Roads NV [-] 0
 83 UT Towers NV [-] 0
 9 Homesite(s) [-] 0
 Total Acres Farmland 15.98
 True Tax Value 15,970.00
 Measured Acres 15.98
 Average True Tax Value/Acre 999.00
 True Tax Value Farmland 15,960.00
 Classified Land Total 0
 Homesite(s) Value (+) 0.00
 Total Land Value 16,000.00

Improvements - Assessor's Office

Card 01

ID	Use	Stry Hgt	Const Type	Grade	Year Const	Eff Year	Cond	Base Rate	Features	Adj Rate	Size/ Area	Comp Value	Phys Depr	Obsol Depr	Mrkt Adj	% Comp	Value
01	T3AW	12		C	2000	2000	AV	17.60		15.64	24 x 36	13510	30	0	111	100	10500

Valuation - Assessor's Office

Assessment Year		03/01/2014	03/01/2013	03/01/2012	03/01/2011	03/01/2010
Reason for Change		ANN ADJ	ANN ADJ	4Y Reval	ANN ADJ	ANN ADJ
VALUATION	Land	\$16,000	\$13,700	\$12,700	\$11,700	\$10,100
(Assessed Value)	Improvements	\$10,500	\$10,700	\$7,100	\$8,400	\$8,300
	Total	\$26,500	\$24,400	\$19,800	\$20,100	\$18,400
VALUATION	Land	\$16,000	\$13,700	\$12,700	\$11,700	\$10,100
(True Tax Value)	Improvements	\$10,500	\$10,700	\$7,100	\$8,400	\$8,300
	Total	\$26,500	\$24,400	\$19,800	\$20,100	\$18,400

Pay Property Taxes

[Click here to pay your Property Taxes online for this parcel](#)

Charges (2009-2015) - Auditor's Office

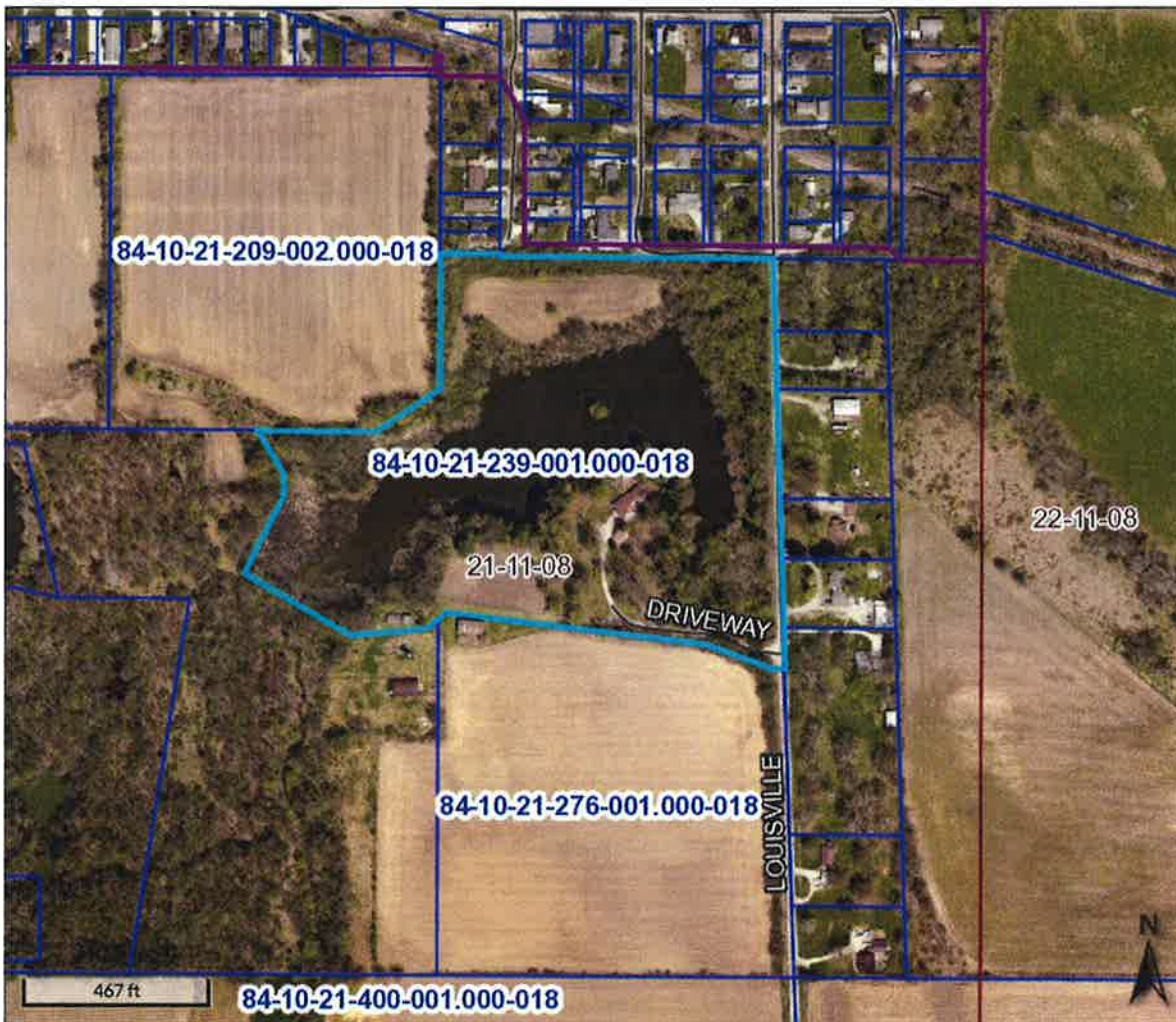
Delinquent payments made after the fall due date will still show due in the year they were originally assessed. If paid, payment will show in the next tax year.

Detail:

Tax Year	Type	Category	Description	Amount	Bal Due
2014 Pay 2015	Property Tax Detail	Tax	1st Installment Tax	\$272.16	\$0.00
2014 Pay 2015	Property Tax Detail	Tax	2nd Installment Tax	\$272.16	\$272.16
2013 Pay 2014	Property Tax Detail	Tax	1st Installment Tax	\$250.51	
2013 Pay 2014	Property Tax Detail	Tax	2nd Installment Tax	\$250.51	
2012 Pay 2013	Property Tax Detail	Tax	1st Installment Tax	\$201.92	
2012 Pay 2013	Property Tax Detail	Tax	2nd Installment Tax	\$201.92	
2011 Pay 2012	Property Tax Detail	Tax	1st Installment Tax	\$201.94	
2011 Pay 2012	Property Tax Detail	Tax	2nd Installment Tax	\$201.94	
2010 Pay 2011	Property Tax Detail	Tax	1st Installment Tax	\$179.27	
2010 Pay 2011	Property Tax Detail	Tax	2nd Installment Tax	\$179.27	
2009 Pay 2010	Property Tax Detail	Tax	1st Installment Tax	\$18.98	
2009 Pay 2010	Property Tax Detail	Tax	2nd Installment Tax	\$18.98	
2008 Pay 2009	Property Tax Detail	Tax	1st Installment Tax	\$18.35	
2008 Pay 2009	Property Tax Detail	Tax	2nd Installment Tax	\$18.35	



BeaconTM Vigo County, IN / City of Terre Haute



Overview



Legend

- Corporate Limits
- Political Township
- Sections
- Blocks
- Parcels
- Road Centerlines

Parcel ID 84-10-21-239-001.000-018
Sec/Twp/Rng n/a
Property Address 6631 LOUISVILLE ROAD
TERRE HAUTE

Alternate ID 113-10-21-239-001
Class Agri Cash grain/general farm
Acreage 22.06

Owner Address MC INTOSH BETTY J
6631 LOUISVILLE RD
TERRE HAUTE, IN 47802

District 018 RILEY
Brief Tax Description MID NE
D- 393/202 21-11-8 22.060 AC

(Note: Not to be used on legal documents)

Date created: 7/9/2015
Last Data Upload: 7/9/2015 2:52:54 AM



Developed by
The Schneider Corporation

Tract 3

BeaconTM Vigo County, IN / City of Terre Haute

Summary - Assessor's Office

Parcel ID 84-10-21-239-001.000-018
Tax ID 113-10-21-239-001
Section Plat 21
Routing Number
Neighborhood 113102 - RILEY
Property Address 6631 Louisville Road
 Terre Haute, IN 47802
Legal Description MID NE D- 393/202 21-11-8 22.060 AC
 (Note: Not to be used on legal documents)
Acreage 22.06
Class 101 - Agri Cash grain/general farm
Tax District/Area 018 - RILEY



Owner - Auditor's Office

Deeded Owner
 Mc Intosh Betty J
 6631 LOUISVILLE RD
 TERRE HAUTE, IN 47802

Site Description - Assessor's Office

Topography Rolling
Public Utilities Elect
Street or Road Paved
Neigh. Life Cycle Static
Legal Acres 22.06
Legal Sq Ft 0

Land - Assessor's Office

Land Type	Soil ID	Actual Front	Acreage	Effect. Front	Effect. Depth	Prod Factor	Depth Factor	Meas Sq Ft	Base Rate	Adj Rate	Extended Value	Influ. Factor
HOMESITE			1.000			1.00	1.00		19,375.00	19,375.00	19,380.00	L 11%
WOODLAND	CnC3		2.750			0.64			2,050.00	1,312.00	3,610.00	0 -80%
WOODLAND	St		10.000			0.50			2,050.00	1,025.00	10,250.00	0 -80%
WOODLAND	IvA		2.100			1.15			2,050.00	2,358.00	4,950.00	0 -80%
NONTILLABLE LAND	St		4.500			0.50			2,050.00	1,025.00	4,610.00	0 -60%
WOODLAND	CnD3		0.350			0.51			2,050.00	1,046.00	370.00	0 -80%
WOODLAND	Sh		0.500			1.11			2,050.00	2,276.00	1,140.00	0 -80%
FARM BUILDINGS	IvA		0.860			1.15			2,050.00	2,358.00	2,030.00	0 -40%

Farm Land Computations - Assessor's Office

Parcel Acreage 22.06
81 Legal Drain NV [-] 0
82 Public Roads NV [-] 0
83 UT Towers NV [-] 0
9 Homesite(s) [-] 1

Total Acres Farmland	21.06
True Tax Value	7,120.00
Measured Acres	21.06
Average True Tax Value/Acre	338.00
True Tax Value Farmland	7,120.00
Classified Land Total	0
Homesite(s) Value (+)	21,510.00
Total Land Value	28,600.00

Residential Dwellings - Assessor's Office

Card 01

Residential Dwelling 1

Occupancy	
Story Height	1.0
Roofing	Material: Asphalt shingles
Attic	None
Basement Type	None
Basement Rec Room	None
Finished Rooms	7
Bedrooms	2
Family Rooms	0
Dining Rooms	0
Full Baths	1; 3-Fixt.
Half Baths	0; 0-Fixt.
Kitchen Sinks	1; 1-Fixt.
Water Heaters	1; 1-Fixt.
Central Air	Yes
Primary Heat	Central Warm Air
Extra Fixtures	0
Total Fixtures	5
Fireplace	Yes
Features	Masonry fireplace Masonry stack (IN)
Porches and Decks	Enclosed Frame Porch 396 CONCP 65 Roof Extension Canopy 65
Yd Item/Spc Fture/Outbldg	BRICK 992 SF WOOD FRAME UTILITY SHED 121 SF
Last Updated	8/13/2002

Construction	Floor	Base Area (sf)	Fin. Area (sf)
	1.0	2114	2114

Improvements - Assessor's Office

Card 01

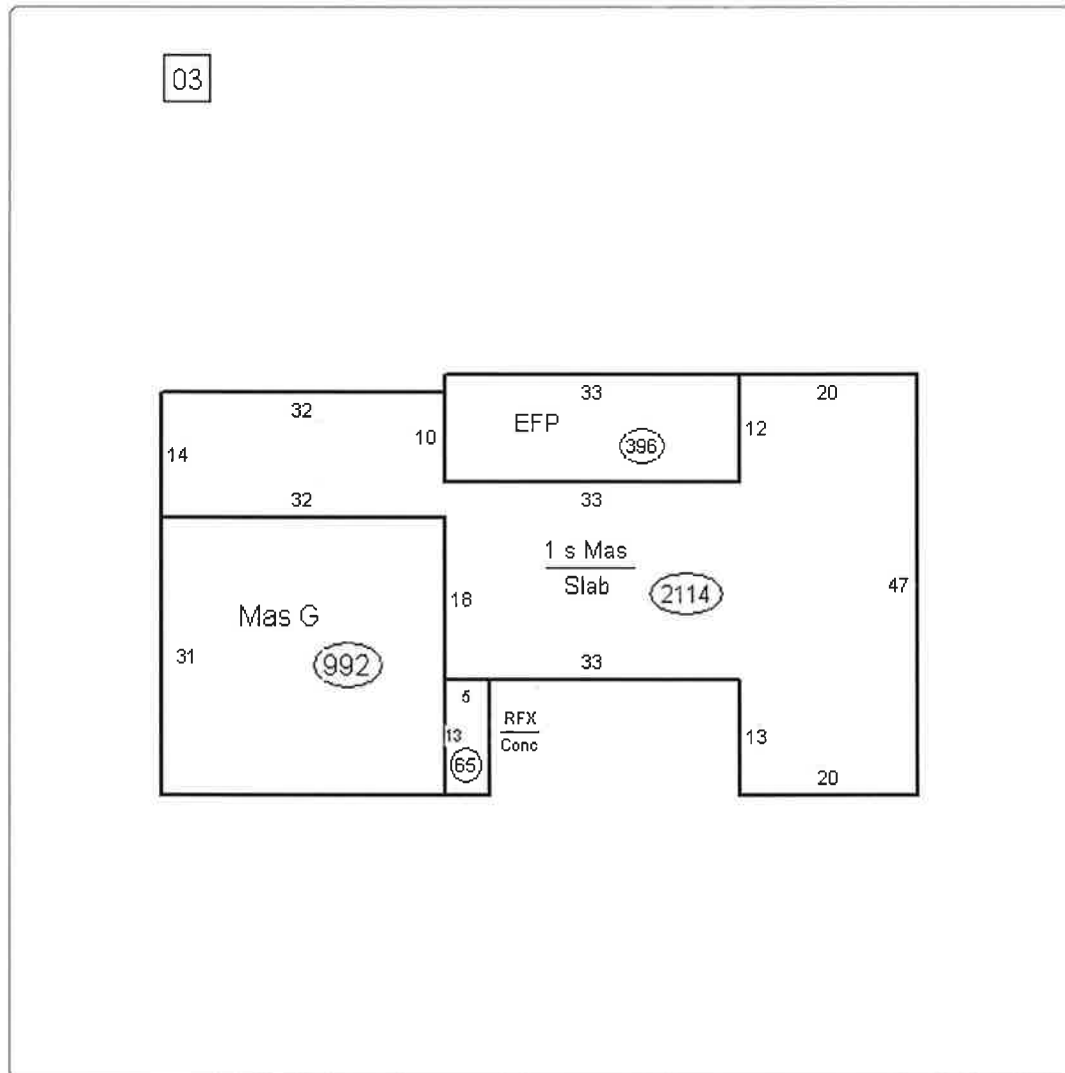
ID	Use	Stry Hgt	Const Type	Grade	Year Const	Eff Year	Cond	Base Rate	Features	Adj Rate	Size/ Area	Comp Value	Phys Depr	Obsol Depr	Mrkt Adj	% Comp	Value
D	DWELL	1		C	1956	1956	AV	0.00	MAS, MAS-STK	0	2114	162490	40	0	111	100	108200
G01	ATTGAR		BRICK		0	0	AV	24.92		24.92	31 x 32	24720	0	0	100	100	
03	UTLSHED		WOOD FRAME	D	1950	1950	P	0.00		0	11 x 11	0	0	0	111	100	100

Valuation - Assessor's Office

Assessment Year	03/01/2014	03/01/2013	03/01/2012	03/01/2011	03/01/2010
Reason for Change	ANN ADJ	ANN ADJ	4Y Reval	ANN ADJ	ANN ADJ



Sketches - Assessor's Office



Map



Summary - Assessor's Office

Parcel ID 84-10-21-251-002.000-018
 Tax ID 113-10-21-251-002
 Section Plat 21
 Routing Number
 Neighborhood 113102 - RILEY
 Property Address State Road 159 Rear
 Terre Haute, IN 47802
 Legal Description IN SW NE D- 393/204 21-11-8 19.115 AC
 (Note: Not to be used on legal documents)
 Acreage 19.115
 Class 199 - Agri Other agricultural use
 Tax District/Area 018 - RILEY



Owner - Auditor's Office

Deeded Owner
 Mc Intosh Betty J
 6631 LOUISVILLE RD
 TERRE HAUTE, IN 47802

Site Description - Assessor's Office

Topography
 Public Utilities
 Street or Road
 Neigh. Life Cycle
 Legal Acres 19.115
 Legal Sq Ft 0

Land - Assessor's Office

Land Type	Soil ID	Actual Front	Acreage	Effect. Front	Effect. Depth	Prod Factor	Depth Factor	Meas Sq Ft	Base Rate	Adj Rate	Extended Value	Influ. Factor
WOODLAND	St		16.437			0.50			2,050.00	1,025.00	16,850.00	0 -80%
TILLABLE LAND	IvA		1.140			1.15			2,050.00	2,358.00	2,690.00	
FARM BUILDINGS	St		1.538			0.50			2,050.00	1,025.00	1,580.00	0 -40%

Farm Land Computations - Assessor's Office

Parcel Acreage 19.115
 81 Legal Drain NV [-] 0
 82 Public Roads NV [-] 0
 83 UT Towers NV [-] 0
 9 Homesite(s) [-] 0
 Total Acres Farmland 19.115
 True Tax Value 7,010.00
 Measured Acres 19.115
 Average True Tax Value/Acre 367.00
 True Tax Value Farmland 7,020.00
 Classified Land Total 0
 Homesite(s) Value (+) 0.00
 Total Land Value 7,000.00

Improvements - Assessor's Office

Card 01

ID	Use	Stry Hgt	Const Type	Grade	Year Const	Eff Year	Cond	Base Rate	Features	Adj Rate	Size/ Area	Comp Value	Phys Depr	Obsol Depr	Mrkt Adj	% Comp	Value
01	QUONSET			D	1945	1945	P	14.15	C	12.65	60 x 40	30360	80	0	111	100	6700
02	SILO	40	GLASS LINED STEEL	D	1945	1945	P	27,600.00		20313.6	1	20310	80	0	111	100	4500

Valuation - Assessor's Office

Assessment Year		03/01/2014	03/01/2013	03/01/2012	03/01/2011	03/01/2010
Reason for Change		ANN ADJ	ANN ADJ	4Y Reval	ANN ADJ	ANN ADJ
VALUATION	Land	\$7,000	\$6,000	\$5,600	\$5,100	\$4,400
(Assessed Value)	Improvements	\$11,200	\$10,700	\$10,200	\$9,000	\$9,000
Total		\$18,200	\$16,700	\$15,800	\$14,100	\$13,400
VALUATION	Land	\$7,000	\$6,000	\$5,600	\$5,100	\$4,400
(True Tax Value)	Improvements	\$11,200	\$10,700	\$10,200	\$9,000	\$9,000
Total		\$18,200	\$16,700	\$15,800	\$14,100	\$13,400

Pay Property Taxes

[Click here to pay your Property Taxes online for this parcel](#)

Charges (2009-2015) - Auditor's Office

Delinquent payments made after the fall due date will still show due in the year they were originally assessed. If paid, payment will show in the next tax year.

Detail:

Tax Year	Type	Category	Description	Amount	Bal Due
2014 Pay 2015	Property Tax Detail	Tax	1st Installment Tax	\$189.64	\$0.00
2014 Pay 2015	Property Tax Detail	Tax	2nd Installment Tax	\$189.64	\$189.64
2013 Pay 2014	Property Tax Detail	Tax	1st Installment Tax	\$173.50	
2013 Pay 2014	Property Tax Detail	Tax	2nd Installment Tax	\$173.50	
2012 Pay 2013	Property Tax Detail	Tax	1st Installment Tax	\$163.62	
2012 Pay 2013	Property Tax Detail	Tax	2nd Installment Tax	\$163.62	
2011 Pay 2012	Property Tax Detail	Tax	1st Installment Tax	\$142.02	
2011 Pay 2012	Property Tax Detail	Tax	2nd Installment Tax	\$142.02	
2010 Pay 2011	Property Tax Detail	Tax	1st Installment Tax	\$130.56	
2010 Pay 2011	Property Tax Detail	Tax	2nd Installment Tax	\$130.56	
2009 Pay 2010	Property Tax Detail	Tax	1st Installment Tax	\$87.31	
2009 Pay 2010	Property Tax Detail	Tax	2nd Installment Tax	\$87.31	
2008 Pay 2009	Property Tax Detail	Tax	1st Installment Tax	\$87.90	
2008 Pay 2009	Property Tax Detail	Tax	2nd Installment Tax	\$87.90	

Total:

Tax Year	Amount	Bal Due
2014 Pay 2015	\$379.28	\$189.64
2013 Pay 2014	\$347.00	
2012 Pay 2013	\$327.24	