



# Beacon™ Vigo County, IN / City of Terre Haute

## Summary - Assessor's Office

Parcel ID 84-09-35-251-004.000-003  
 Tax ID 102-09-35-251-004  
 Section Plat 35  
 Routing Number  
 Neighborhood 102564 - HONEY CREEK  
 Property Address 2001 Dallas Dr  
 Terre Haute, IN 47802  
 Legal Description PRT W-1/2 NE D-378/523 35-11-9 54.560 AC  
 (Note: Not to be used on legal documents)  
 Acreage 54.56  
 Class 100 - Agri Vacant land  
 Tax District/Area 003 - HONEY CREEK

## Owner - Auditor's Office

Deeded Owner  
 A-Cix Inc  
 C/O ROBERT STILLER  
 27 MONROE BLVD  
 TERRE HAUTE, IN 47803

## Site Description - Assessor's Office

Topography Rolling  
 Public Utilities  
 Street or Road Unpaved  
 Neigh. Life Cycle Improving  
 Legal Acres 54.56  
 Legal Sq Ft 0

## Land - Assessor's Office

Land Type	Soil ID	Actual Front	Acreage	Effect. Front	Effect. Depth	Prod Factor	Depth Factor	Meas Sq Ft	Base Rate	Adj Rate	Extended Value	Influ. Factor	Value
TILLABLE LAND	Wa		7.580			1.15			1,850.00	2,128.00	16,130.00		16,130.00
TILLABLE LAND	MuB2		17.500			1.02			1,850.00	1,887.00	33,020.00		33,020.00
WOODLAND	Ra		27.500			1.28			1,850.00	2,368.00	65,120.00	0 -80%	13,020.00
TILLABLE LAND	CnC2		1.980			0.72			1,850.00	1,332.00	2,640.00		2,640.00

Land Detail Value Sum 64,810.00

## Valuation - Assessor's Office

Assessment Year		01/01/2017	01/01/2016	03/01/2015	03/01/2014	03/01/2013
Reason for Change		ANN ADJ	ANN ADJ	ANN ADJ	ANN ADJ	ANN ADJ
VALUATION	Land	\$64,800	\$68,600	\$71,800	\$71,800	\$61,700
(Assessed Value)	Improvements	\$0	\$0	\$0	\$0	\$0
	Total	\$64,800	\$68,600	\$71,800	\$71,800	\$61,700
VALUATION	Land	\$64,800	\$68,600	\$71,800	\$71,800	\$61,700
(True Tax Value)	Improvements	\$0	\$0	\$0	\$0	\$0
	Total	\$64,800	\$68,600	\$71,800	\$71,800	\$61,700

## Charges (2012-2016) - Auditor's Office

Delinquent payments made after the fall due date will still show due in the year they were originally assessed. If paid, payment will show in the next tax year.

### Detail:

Tax Year	Type	Category	Description	Amount	Bal Due
2016 Pay 2017	Property Tax Detail	Tax	1st Installment Tax	\$686.00	\$686.00
2016 Pay 2017	Property Tax Detail	Tax	2nd Installment Tax	\$686.00	\$686.00
2015 Pay 2016	Property Tax Detail	Tax	1st Installment Tax	\$718.00	
2015 Pay 2016	Property Tax Detail	Tax	2nd Installment Tax	\$718.00	
2014 Pay 2015	Property Tax Detail	Tax	1st Installment Tax	\$718.00	
2014 Pay 2015	Property Tax Detail	Tax	2nd Installment Tax	\$718.00	
2013 Pay 2014	Property Tax Detail	Penalty	Additional 5% Penalty	\$28.55	
2013 Pay 2014	Property Tax Detail	Penalty	LY 2nd Installment Penalty	\$28.55	

Tax Year	Type	Category	Description	Amount	Bal Due
2013 Pay 2014	Property Tax Detail	Tax	1st Installment Tax	\$617.00	
2013 Pay 2014	Property Tax Detail	Tax	Last Year 2nd Installment Tax	\$571.00	
2013 Pay 2014	Property Tax Detail	Tax	2nd Installment Tax	\$617.00	
2012 Pay 2013	Property Tax Detail	Tax	1st Installment Tax	\$571.00	
2012 Pay 2013	Property Tax Detail	Penalty	2nd Installment Penalty	\$28.55	
2012 Pay 2013	Property Tax Detail	Tax	2nd Installment Tax	\$571.00	

**Total:**

Tax Year	Amount	Bal Due
2016 Pay 2017	\$1,372.00	\$1,372.00
2015 Pay 2016	\$1,436.00	
2014 Pay 2015	\$1,436.00	
2013 Pay 2014	\$1,862.10	
2012 Pay 2013	\$1,170.55	

**Map**

No data available for the following modules: Farm Land Computations - Assessor's Office, Residential Dwellings - Assessor's Office, Improvements - Assessor's Office, Transfer History - Assessor's Office, Transfer Recording - Auditor's Office, Homestead Allocations - Assessor's Office, Deductions - Auditor's Office, Payments (2010-2016) - Treasurer's Office, Exemptions - Auditor's Office, Photos - Assessor's Office, Sketches - Assessor's Office.

The information in this web site represents current data from a working file which is updated continuously. Information is believed reliable, but its accuracy cannot be guaranteed. No warranty, expressed or implied, is provided for the data herein, or its use.

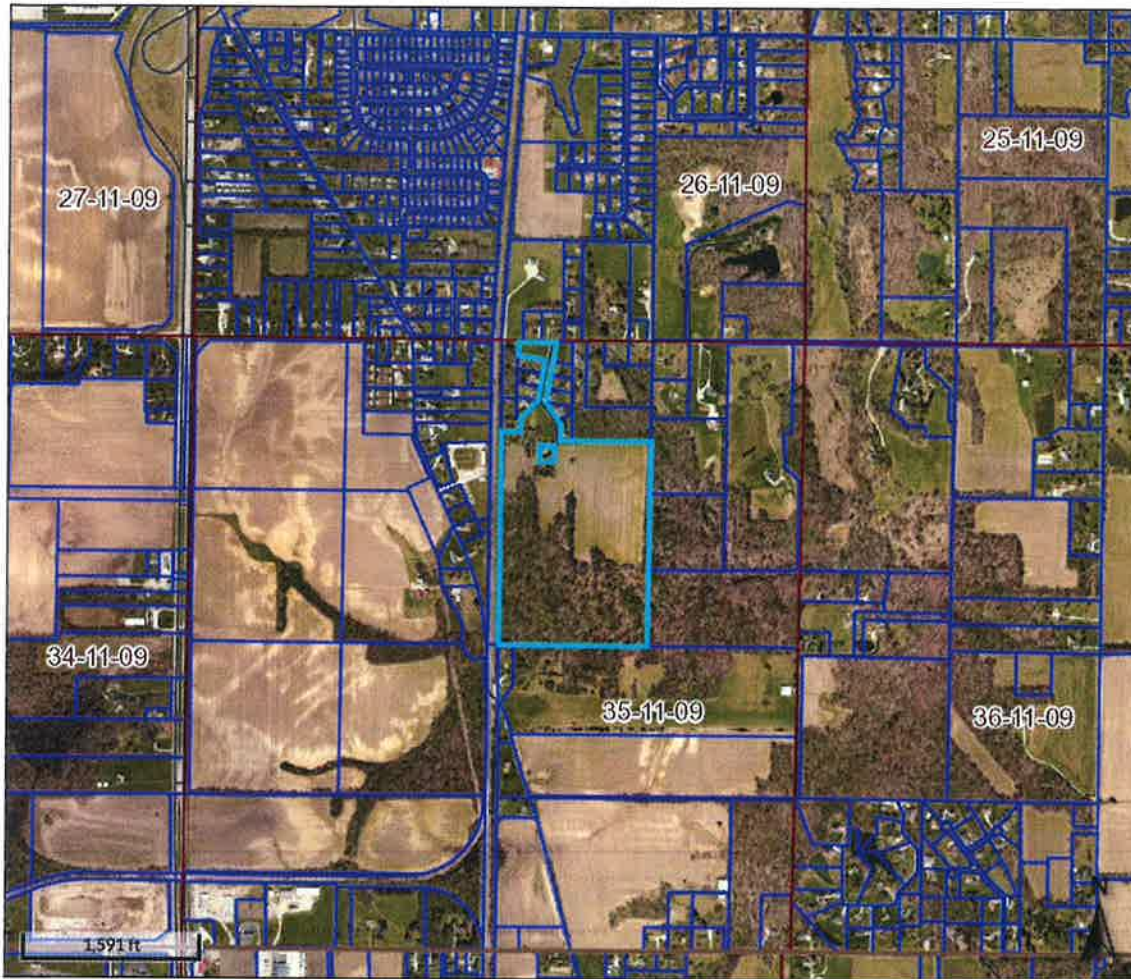
Last Data Upload: 1/21/2017 1:28:54 AM



Developed by  
The Schneider  
Corporation

**Beacon**<sup>TM</sup>

Vigo County, IN / City of Terre Haute



Overview



Legend

- Corporate Limits
- Political Township
- Sections
- Blocks
- Parcels
- Road Centerlines

Parcel ID 84-09-35-251-004.000-003

Sec/Twp/Rng 35

Property Address 2001 DALLAS DR  
TERRE HAUTE

Alternate ID 102-09-35-251-004

Class Agri Vacant land

Acreage 54.56

Owner Address A-CIX INC

27 MONROE BLVD

TERRE HAUTE, IN 47803

District 003 HONEY CREEK

Brief Tax Description PRT W-1/2 NE

D-378/523 35-11-9 54.560 AC

(Note: Not to be used on legal documents)

Date created: 5/5/2017

Last Data Uploaded: 1/21/2017 1:28:54 AM

Developed by  
The Schneider Corporation