

Summary - Assessor's Office

Parcel ID 84-06-19-377-002.000-022
 Tax ID 122-06-19-377-002
 Section Plat 19
 Routing Number
 Neighborhood 122313 - SUGAR CREEK
 Property 925 W National Ave
 Address West Terre Haute, IN 47885
 Legal Description BENNETT PART PLAT E SIDE N PRT 2006022823 D-443/3723 19-12-9 LOT 3.690 AC
 (Note: Not to be used on legal documents)
 Acreage 0.69
 Class 499 - Com Other commercial structure
 Tax District/Area 022 - SUGAR CREEK

[View Map](#)



Owner - Auditor's Office

Deeded Owner
 Mellinger John
 JOHN MELLINGER ESTATE
 P.O. BOX 540
 TERRE HAUTE, IN 47808-0540

Site Description - Assessor's Office

Topography
 Public Utilities
 Street or Road
 Neigh. Life Cycle
 Legal Acres 0.69
 Legal Sq Ft 30,056

Land - Assessor's Office

| Land Type | Soil ID | Actual Front | Acreage | Effect. Front | Effect. Depth | Prod Factor | Depth Factor | Meas Sq Ft | Base Rate | Adj Rate | Extended Value | Influ. Factor | Value |
|-----------|---------|--------------|---------|---------------|---------------|-------------|--------------|------------|-----------|-----------|----------------|---------------|-----------|
| PRIMARY | | | 0.690 | | | 1.00 | 1.34 | | 47,319.00 | 63,407.00 | 43,750.00 | L 27% | 55,560.00 |

Land Detail Value Sum 55,560.00

Improvements - Assessor's Office

Card 01

| ID | Use | Const Type | Grade | Year Const | Eff Year | Cond | Base Rate | Features | Adj Rate | Size/ Area | Cost Value | Phys Depr | Obsol Depr | Mrkt Adj | % Comp | Value |
|----|--------|------------|-------|------------|----------|------|-----------|----------|----------|------------|------------|-----------|------------|----------|--------|-------|
| C | GENRET | | D+2 | 1959 | 1959 | AV | 0.00 | | 0 | 5880 | 278800 | 80 | 0 | 94 | 100 | 70800 |
| 01 | WDDK | WOOD FRAME | C | 2003 | 2003 | AV | 0.00 | | 0 | 25 x 25 | 0 | 0 | 0 | 94 | 100 | 7600 |

Transfer History - Assessor's Office

| Date | Owner 1 | Owner 2 | Book & Page | Amount |
|------------|-------------------------------|---------|-------------|--------------|
| 5/6/2016 | MELLINGER JOHN | | | \$129,550.00 |
| 3/10/2008 | LAWSON ANDREA | | | \$0.00 |
| 11/22/2006 | MELLINGER JOHN | | | \$400,000.00 |
| 10/9/1998 | FUHRER CHARLES T & MARY HELEN | | 443/3723 | \$0.00 |

Transfer Recording - Auditor's Office

| Transfer # | Date | Type | Instrument | Instr # | Book | Page | From | To |
|------------|-----------|------------------|--------------|------------|------|------|---------------|----------------|
| 6954 | 3/10/2008 | Change Ownership | Sheriff Deed | 2008003078 | | | LAWSON ANDREA | MELLINGER JOHN |

Valuation - Assessor's Office

| Assessment Year | | 01/01/2019 | 01/01/2018 | 01/01/2017 | 01/01/2016 | 03/01/2015 |
|-------------------|--------------|-----------------|-----------------|-----------------|-----------------|-----------------|
| Reason for Change | | ANN ADJ | ANN ADJ | ANN ADJ | ANN ADJ | ANN ADJ |
| VALUATION | Land | \$18,700 | \$41,400 | \$41,400 | \$41,400 | \$41,400 |
| (Assessed Value) | Improvements | \$26,400 | \$2,400 | \$600 | \$600 | \$56,400 |
| | Total | \$45,100 | \$43,800 | \$42,000 | \$42,000 | \$97,800 |
| VALUATION | Land | \$18,700 | \$41,400 | \$41,400 | \$41,400 | \$41,400 |
| (True Tax Value) | Improvements | \$26,400 | \$2,400 | \$600 | \$600 | \$56,400 |
| | Total | \$45,100 | \$43,800 | \$42,000 | \$42,000 | \$97,800 |

Charges (2012-2018) - Auditor's Office

Delinquent payments made after the fall due date will still show due in the year they were originally assessed. If paid, payment will show in the next tax year.

Detail:

| Tax Year | Type | Category | Description | Amount | Bal Due |
|---------------|---------------------------|----------|---|------------|----------|
| 2018 Pay 2019 | Property Tax Detail | Penalty | 1st Installment Penalty | \$60.25 | \$60.25 |
| 2018 Pay 2019 | Property Tax Detail | Penalty | Additional 5% Penalty | \$28.88 | \$28.88 |
| 2018 Pay 2019 | Property Tax Detail | Penalty | Former Yr 1st Install Penalty | \$57.75 | \$57.75 |
| 2018 Pay 2019 | Property Tax Detail | Penalty | LY 2nd Installment Penalty | \$28.88 | \$28.88 |
| 2018 Pay 2019 | Property Tax Detail | Tax | 1st Installment Tax | \$602.50 | \$602.50 |
| 2018 Pay 2019 | Property Tax Detail | Tax | Last Year 2nd Installment Tax | \$577.50 | \$577.50 |
| 2018 Pay 2019 | Special Assessment Detail | Penalty | WEST VIGO LEVEE CONSERVANCY 1st Installment Penalty | \$4.34 | \$4.34 |
| 2018 Pay 2019 | Special Assessment Detail | Penalty | WEST VIGO LEVEE CONSERVANCY Additional 5% Penalty | \$2.93 | \$2.93 |
| 2018 Pay 2019 | Special Assessment Detail | Penalty | WEST VIGO LEVEE CONSERVANCY Former Yr 1st Install Penalty | \$5.86 | \$5.86 |
| 2018 Pay 2019 | Special Assessment Detail | Penalty | WEST VIGO LEVEE CONSERVANCY LY 2nd Installment Penalty | \$2.93 | \$2.93 |
| 2018 Pay 2019 | Special Assessment Detail | Tax | WEST VIGO LEVEE CONSERVANCY 1st Installment Tax | \$43.43 | \$43.43 |
| 2018 Pay 2019 | Special Assessment Detail | Tax | WEST VIGO LEVEE CONSERVANCY Last Year 2nd Installment Tax | \$58.61 | \$58.61 |
| 2018 Pay 2019 | Property Tax Detail | Tax | 2nd Installment Tax | \$602.50 | \$602.50 |
| 2018 Pay 2019 | Special Assessment Detail | Tax | WEST VIGO LEVEE CONSERVANCY 2nd Installment Tax | \$43.43 | \$43.43 |
| 2017 Pay 2018 | Property Tax Detail | Penalty | 1st Installment Penalty | \$57.75 | |
| 2017 Pay 2018 | Property Tax Detail | Tax | 1st Installment Tax | \$577.50 | |
| 2017 Pay 2018 | Special Assessment Detail | Penalty | WEST VIGO LEVEE CONSERVANCY 1st Installment Penalty | \$5.86 | |
| 2017 Pay 2018 | Special Assessment Detail | Tax | WEST VIGO LEVEE CONSERVANCY 1st Installment Tax | \$58.61 | |
| 2017 Pay 2018 | Property Tax Detail | Penalty | 2nd Installment Penalty | \$28.88 | |
| 2017 Pay 2018 | Property Tax Detail | Tax | 2nd Installment Tax | \$577.50 | |
| 2017 Pay 2018 | Special Assessment Detail | Penalty | WEST VIGO LEVEE CONSERVANCY 2nd Installment Penalty | \$2.93 | |
| 2017 Pay 2018 | Special Assessment Detail | Tax | WEST VIGO LEVEE CONSERVANCY 2nd Installment Tax | \$58.61 | |
| 2016 Pay 2017 | Property Tax Detail | Penalty | LY 1st Installment Penalty | \$135.20 | |
| 2016 Pay 2017 | Property Tax Detail | Penalty | LY 2nd Installment Penalty | \$135.20 | |
| 2016 Pay 2017 | Property Tax Detail | Tax | 1st Installment Tax | \$577.50 | |
| 2016 Pay 2017 | Property Tax Detail | Tax | Last Year 1st Installment Tax | \$1,352.00 | |
| 2016 Pay 2017 | Property Tax Detail | Tax | Last Year 2nd Installment Tax | \$1,352.00 | |
| 2016 Pay 2017 | Special Assessment Detail | Tax | WEST VIGO LEVEE CONSERVANCY 1st Installment Tax | \$44.14 | |
| 2016 Pay 2017 | Property Tax Detail | Tax | 2nd Installment Tax | \$577.50 | |
| 2016 Pay 2017 | Special Assessment Detail | Tax | WEST VIGO LEVEE CONSERVANCY 2nd Installment Tax | \$44.14 | |
| 2015 Pay 2016 | Property Tax Detail | Penalty | 1st Installment Penalty | \$135.20 | |
| 2015 Pay 2016 | Property Tax Detail | Penalty | LY 1st Installment Penalty | \$130.70 | |
| 2015 Pay 2016 | Property Tax Detail | Penalty | LY 2nd Installment Penalty | \$130.70 | |
| 2015 Pay 2016 | Property Tax Detail | Penalty | Prior Year Penalty | \$509.42 | |
| 2015 Pay 2016 | Property Tax Detail | Tax | 1st Installment Tax | \$1,352.00 | |
| 2015 Pay 2016 | Property Tax Detail | Tax | Last Year 1st Installment Tax | \$1,307.00 | |
| 2015 Pay 2016 | Property Tax Detail | Tax | Last Year 2nd Installment Tax | \$1,307.00 | |
| 2015 Pay 2016 | Property Tax Detail | Tax | Prior Year Tax | \$1,219.66 | |
| 2015 Pay 2016 | Property Tax Detail | Penalty | 2nd Installment Penalty | \$135.20 | |
| 2015 Pay 2016 | Property Tax Detail | Tax | 2nd Installment Tax | \$1,352.00 | |
| 2014 Pay 2015 | Property Tax Detail | Penalty | 1st Installment Penalty | \$130.70 | |
| 2014 Pay 2015 | Property Tax Detail | Penalty | Former Yr 1st Install Penalty | \$258.30 | |
| 2014 Pay 2015 | Property Tax Detail | Penalty | LY 1st Installment Penalty | \$129.15 | |
| 2014 Pay 2015 | Property Tax Detail | Penalty | LY 2nd Installment Penalty | \$129.15 | |
| 2014 Pay 2015 | Property Tax Detail | Tax | 1st Installment Tax | \$1,307.00 | |
| 2014 Pay 2015 | Property Tax Detail | Tax | Last Year 1st Installment Tax | \$1,291.50 | |
| 2014 Pay 2015 | Property Tax Detail | Tax | Last Year 2nd Installment Tax | \$1,291.50 | |
| 2014 Pay 2015 | Property Tax Detail | Penalty | 2nd Installment Penalty | \$130.70 | |
| 2014 Pay 2015 | Property Tax Detail | Penalty | Former Yr 2nd Install Penalty | \$121.97 | |
| 2014 Pay 2015 | Property Tax Detail | Tax | 2nd Installment Tax | \$1,307.00 | |

| Tax Year | Type | Category | Description | Amount | Bal Due |
|---------------|---------------------|----------|-------------------------------|------------|---------|
| 2013 Pay 2014 | Property Tax Detail | Penalty | 1st Installment Penalty | \$129.15 | |
| 2013 Pay 2014 | Property Tax Detail | Penalty | Additional 5% Penalty | \$64.58 | |
| 2013 Pay 2014 | Property Tax Detail | Penalty | LY 2nd Installment Penalty | \$64.58 | |
| 2013 Pay 2014 | Property Tax Detail | Tax | 1st Installment Tax | \$1,291.50 | |
| 2013 Pay 2014 | Property Tax Detail | Tax | Last Year 2nd Installment Tax | \$1,291.50 | |
| 2013 Pay 2014 | Property Tax Detail | Penalty | 2nd Installment Penalty | \$129.15 | |
| 2013 Pay 2014 | Property Tax Detail | Tax | 2nd Installment Tax | \$1,291.50 | |
| 2012 Pay 2013 | Property Tax Detail | Penalty | Additional 5% Penalty | \$53.44 | |
| 2012 Pay 2013 | Property Tax Detail | Penalty | LY 2nd Installment Penalty | \$53.44 | |
| 2012 Pay 2013 | Property Tax Detail | Tax | 1st Installment Tax | \$1,291.50 | |
| 2012 Pay 2013 | Property Tax Detail | Tax | Last Year 2nd Installment Tax | \$1,068.70 | |
| 2012 Pay 2013 | Property Tax Detail | Penalty | 2nd Installment Penalty | \$64.58 | |
| 2012 Pay 2013 | Property Tax Detail | Tax | 2nd Installment Tax | \$1,291.50 | |
| 2011 Pay 2012 | Property Tax Detail | Penalty | 1st Installment Penalty | \$132.45 | |
| 2011 Pay 2012 | Property Tax Detail | Penalty | Additional 5% Penalty | \$51.53 | |
| 2011 Pay 2012 | Property Tax Detail | Penalty | Former Yr 1st Install Penalty | \$63.05 | |
| 2011 Pay 2012 | Property Tax Detail | Penalty | LY 2nd Installment Penalty | \$51.53 | |
| 2011 Pay 2012 | Property Tax Detail | Tax | 1st Installment Tax | \$1,324.50 | |
| 2011 Pay 2012 | Property Tax Detail | Tax | Last Year 2nd Installment Tax | \$1,030.50 | |
| 2011 Pay 2012 | Property Tax Detail | Penalty | 2nd Installment Penalty | \$66.23 | |
| 2011 Pay 2012 | Property Tax Detail | Tax | 2nd Installment Tax | \$1,324.50 | |

Total:

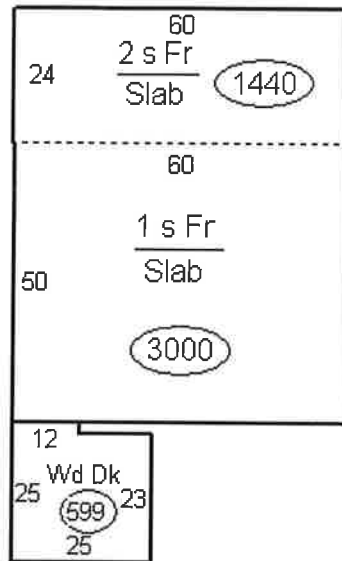
| Tax Year | Amount | Bal Due |
|---------------|------------|------------|
| 2018 Pay 2019 | \$2,119.79 | \$2,119.79 |
| 2017 Pay 2018 | \$1,367.64 | |
| 2016 Pay 2017 | \$4,217.68 | |
| 2015 Pay 2016 | \$7,578.88 | |
| 2014 Pay 2015 | \$6,096.97 | |
| 2013 Pay 2014 | \$4,261.96 | |
| 2012 Pay 2013 | \$3,823.16 | |
| 2011 Pay 2012 | \$4,044.29 | |

Photos - Assessor's Office





Sketches - Assessor's Office



Map



No data available for the following modules: Farm Land Computations - Assessor's Office, Residential Dwellings - Assessor's Office, Homestead Allocations - Assessor's Office, Deductions - Auditor's Office, Payments (2010-2018) - Treasurer's Office, Exemptions - Auditor's Office.