



BeaconTM Vigo County, IN / City of Terre Haute

Summary - Assessor's Office

Parcel ID 84-09-10-401-003 000-004
 Tax ID 103-09-10-401-003
 Section Plat 10
 Routing Number
 Neighborhood 102103 - HONEY CREEK
 Property 1335 Springhill Rd
 Address Terre Haute, IN 47802
 Legal Description 16A OFF W SIDE NW SE E x 2.000 AC NW COR 2005012306 D-347/R17 10 11 9
 14.000 AC
 (Note: Not to be used in listing of parcels with)
 Acreage 14
 Class 101 - Agri Cash grain/general farm
 Tax District/Area 00A

[View Map](#)



Owner - Auditor's Office

Deeded Owner

[Pawnee Motor Company Inc.](#)

650 S ST RD 46
TERRE HAUTE, IN 47803

Site Description - Assessor's Office

Topography Rolling
 Public Utilities
 Street or Road Paved
 Neigh. Life Cycle Static
 Legal Acres 14
 Legal Sq Ft 0

Land - Assessor's Office

Land Type	Soil ID	Actual Front	Acreage	Effect Front	Effect Depth	Prod Factor	Depth Factor	Meas Sq Ft	Base Rate	Adj Rate	Extended Value	Influ. Factor	Value
HOMESITE			1.000			1.00	1.00		19,383.00	19,383.00	19,380.00	1.6%	20,540.00
TILLABLE LAND	Tp		4.500			1.02			1,560.00	1,591.00	7,160.00		7,160.00
TILLABLE LAND	EIB		3.830			0.77			1,560.00	1,201.00	4,600.00		4,600.00
TILLABLE LAND	EIA		1.170			0.77			1,560.00	1,201.00	1,410.00		1,410.00
TILLABLE LAND	Rg		1.170			1.28			1,560.00	1,997.00	2,340.00		2,340.00
TILLABLE LAND	Gr		2.330			1.02			1,560.00	1,591.00	3,710.00		3,710.00

Land Detail Value Sum 39,760.00

Residential Dwellings - Assessor's Office

Card 01		
Residential Dwelling 1		
Occupancy		
Story Height	1.0	
Roofing	Material: Asphalt shingles	
Attic	None	
Basement Type	Full	
Basement Rec Room	None	
Finished Rooms	5	
Bedrooms	2	
Family Rooms	0	
Dining Rooms	0	
Full Baths	1; 3-Fixt.	
Half Baths	0; 0-Fixt.	
4 Fixture Baths	0; 0-Fixt.	
5 Fixture Baths	0; 0-Fixt.	
Kitchen Sinks	1; 1-Fixt.	
Water Heaters	1; 1-Fixt.	
Central Air	Yes	
Primary Heat	Central Warm Air	
Extra Fixtures	0	
Total Fixtures	5	
Fireplace	No	
Features	None	
Porches and Decks	Conventional Canopy 288 Open Masonry Porch 198	
Yd Item/Spc Fture/Outbldg	BRICK 462 SF BRICK UTILITY SHED 168 SF WOOD FRAME 288 SF	
Last Updated	10/25/2003	
Construction	Floor	Base Area
	1.0	1222
Concrete block	B	1222
	Total	2444

Improvements - Assessor's Office

Card 01

ID	Use	Story Hgt	Const Type	Grade	Year Const	Eff Year	Cond	Base Rate	Features	Adj Rate	Size/ Area	Cost Value	Phys Depr	Obso Depr	Mrkt Adj	% Comp	Value
D	DWELL	1		C-1	1954	1954	AV	0.00		0	1222	126160	42	0	106	100	77600
G01	ATTGAR		BRICK		0	0	AV	28.86		28.86	22 x 21	13330	0	0	100	100	0
02	UTLSHED		BRICK	D	1954	1954	F	49.02		36.47	12 x 14	6130	70	0	106	100	2000
03	CNPY/		WOOD FRAME	D	1990	1990	AV	0.00		0	12 x 24	0	0	0	106	0	100

Transfer History - Assessor's Office

Date	Owner 1	Owner 2	Book & Page	Amount
7/21/2005	ENNEN HERMAN C JR & VIRGINIA			\$680,000

Valuation - Assessor's Office

Assessment Year		01/01/2019	01/01/2018	01/01/2017	01/01/2016	03/01/2015
Reason for Change		ANN ADJ	ANN ADJ	ANN ADJ	ANN ADJ	ANN ADJ
VALUATION	Land	\$39,800	\$39,800	\$42,600	\$43,500	\$44,600
(Assessed Value)	Improvements	\$79,700	\$77,400	\$75,300	\$73,800	\$72,200
	Total	\$119,500	\$117,200	\$117,900	\$117,300	\$116,800
VALUATION	Land	\$39,800	\$39,800	\$42,600	\$43,500	\$44,600
(True Tax Value)	Improvements	\$79,700	\$77,400	\$75,300	\$73,800	\$72,200
	Total	\$119,500	\$117,200	\$117,900	\$117,300	\$116,800

Charges (2012-2018) - Auditor's Office

Delinquent payments made after the fall due date will still show due in the year they were originally assessed. If paid, payment will show in the next tax year.

Detail:

Tax Year	Type	Category	Description	Amount	Bal Due
2018 Pay 2019	Property Tax Detail	Tax	1st Installment Tax	\$1,176.28	\$0.00
2018 Pay 2019	Special Assessment Detail	Tax	HONEY CREEK CONSERVANCY 1st Installment Tax	\$74.60	\$0.00
2018 Pay 2019	Property Tax Detail	Tax	2nd Installment Tax	\$1,176.28	\$0.00
2018 Pay 2019	Special Assessment Detail	Tax	HONEY CREEK CONSERVANCY 2nd Installment Tax	\$74.60	\$0.00
2017 Pay 2018	Property Tax Detail	Tax	1st Installment Tax	\$1,182.49	

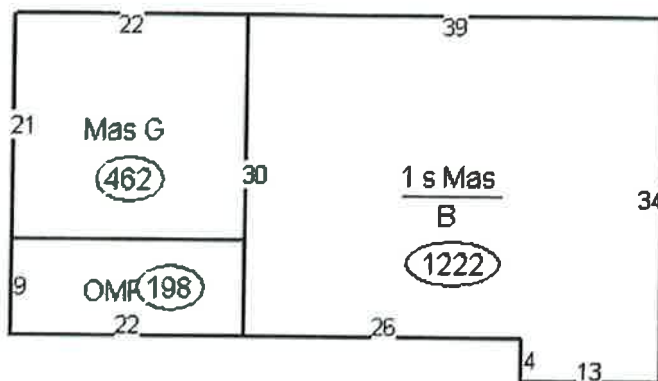
2017 Pay 2018	Special Assessment Detail	Tax	HONEY CREEK CONSERVANCY 1st Installment Tax	\$137.47
2017 Pay 2018	Property Tax Detail	Tax	2nd Installment Tax	\$1,182.49
2017 Pay 2018	Special Assessment Detail	Tax	HONEY CREEK CONSERVANCY 2nd Installment Tax	\$137.47
2016 Pay 2017	Property Tax Detail	Tax	1st Installment Tax	\$1,178.14
2016 Pay 2017	Special Assessment Detail	Tax	HONEY CREEK CONSERVANCY 1st Installment Tax	\$137.83
2016 Pay 2017	Property Tax Detail	Tax	2nd Installment Tax	\$1,178.14
2016 Pay 2017	Special Assessment Detail	Tax	HONEY CREEK CONSERVANCY 2nd Installment Tax	\$137.83
2015 Pay 2016	Property Tax Detail	Tax	1st Installment Tax	\$1,172.36
2015 Pay 2016	Special Assessment Detail	Tax	HONEY CREEK CONSERVANCY 1st Installment Tax	\$129.18
2015 Pay 2016	Property Tax Detail	Tax	2nd Installment Tax	\$1,172.36
2015 Pay 2016	Special Assessment Detail	Tax	HONEY CREEK CONSERVANCY 2nd Installment Tax	\$129.18
2014 Pay 2015	Property Tax Detail	Tax	1st Installment Tax	\$1,420.46
2014 Pay 2015	Special Assessment Detail	Tax	HONEY CREEK CONSERVANCY 1st Installment Tax	\$161.15
2014 Pay 2015	Property Tax Detail	Tax	2nd Installment Tax	\$1,420.46
2014 Pay 2015	Special Assessment Detail	Tax	HONEY CREEK CONSERVANCY 2nd Installment Tax	\$161.15
2013 Pay 2014	Property Tax Detail	Tax	1st Installment Tax	\$1,369.45
2013 Pay 2014	Special Assessment Detail	Tax	HONEY CREEK CONSERVANCY 1st Installment Tax	\$90.10
2013 Pay 2014	Property Tax Detail	Tax	2nd Installment Tax	\$1,369.45
2013 Pay 2014	Special Assessment Detail	Tax	HONEY CREEK CONSERVANCY 2nd Installment Tax	\$90.10
2012 Pay 2013	Property Tax Detail	Tax	1st Installment Tax	\$1,345.32
2012 Pay 2013	Special Assessment Detail	Tax	HONEY CREEK CONSERVANCY 1st Installment Tax	\$88.64
2012 Pay 2013	Property Tax Detail	Tax	2nd Installment Tax	\$1,345.32
2012 Pay 2013	Special Assessment Detail	Tax	HONEY CREEK CONSERVANCY 2nd Installment Tax	\$88.64
2011 Pay 2012	Special Assessment Detail	Tax	HONEY CREEK CONSERVANCY 1st Installment Tax	\$104.90
2011 Pay 2012	Special Assessment Detail	Tax	HONEY CREEK CONSERVANCY 2nd Installment Tax	\$104.90

Total:

Tax Year	Amount	Bal Due
2018 Pay 2019	\$2,501.76	\$0.00
2017 Pay 2018	\$2,639.92	
2016 Pay 2017	\$2,631.94	
2015 Pay 2016	\$2,603.08	
2014 Pay 2015	\$3,163.22	
2013 Pay 2014	\$2,919.10	
2012 Pay 2013	\$2,867.92	
2011 Pay 2012	\$209.80	

Photos - Assessor's Office**Sketches - Assessor's Office**

02 Cnpy (Upper)
(288)



Map



No data available for the following modules: Farm Land Computations - Assessor's Office, Transfer Recording - Auditor's Office, Homestead Allocations - Assessor's Office, Deductions - Auditor's Office, Payments (2010-2018) - Treasurer's Office, Exemptions - Auditor's Office.

[Open Privacy Policy](#)
[GDPR Privacy Notice](#)

Last Data Update: 2/19/2020 at 10:40 AM



Worksheet: 141



BeaconTM

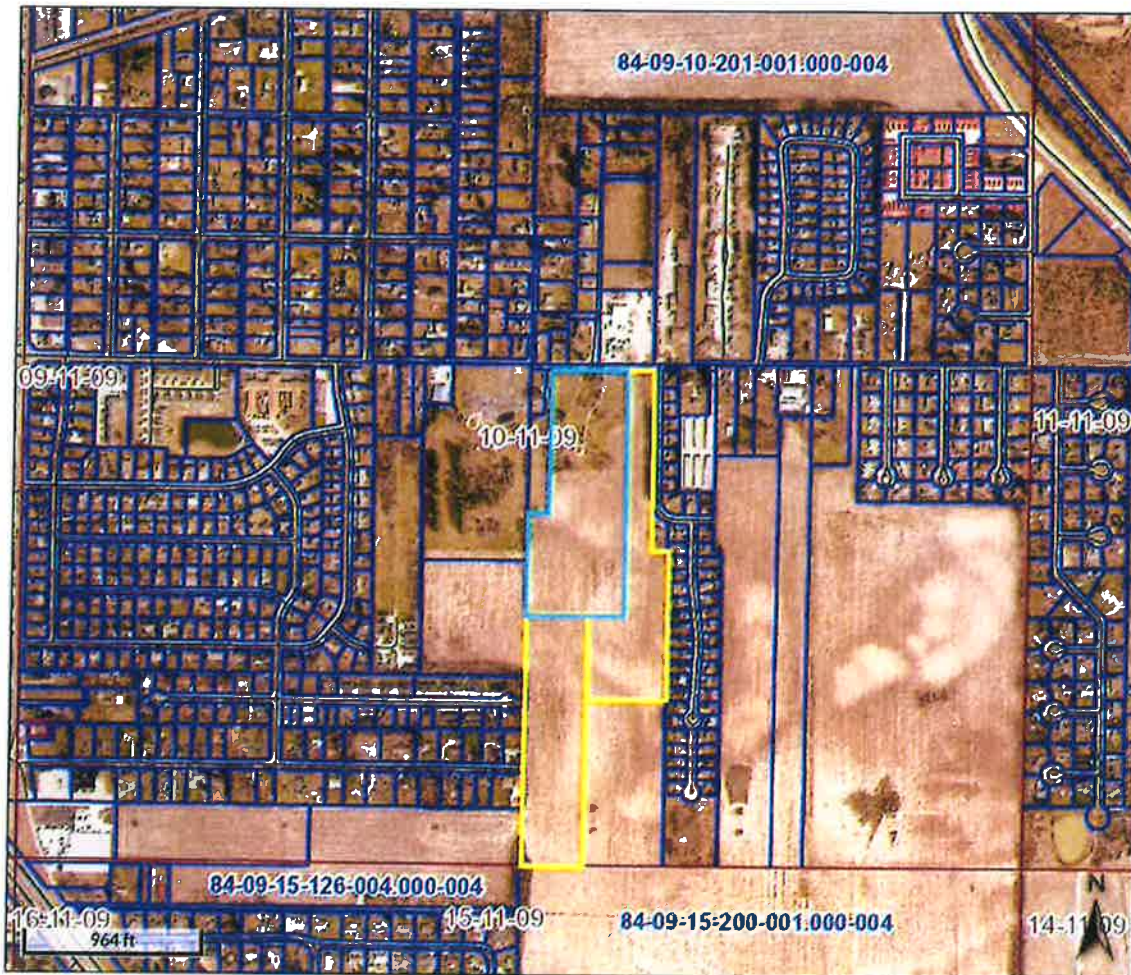
Vigo County, IN / City of Terre Haute

Overview



Legend

- Corporate Limits
- Political Township
- Sections
- Blocks
- Parcels
- Road Centerlines
- 2019 Sales



Parcel ID	84-09-10-401-003.000-004	Alternate ID	103-09-10-401-003	Owner Address	PRINCETON MINING COMPANY INC
Sec/Twp/Rng	10	Class	Agri Cash grain/general farm		650 S ST RD 46
Property Address	1335 SPRINGHILL RD	Acreage	14		TERRE HAUTE, IN 47803
	TERRE HAUTE				
Neighborhood	102103 - HONEY CREEK				
District	004				
Brief Tax Description	16A OFF W SIDE NW SE EX 2.000 AC NW COR				
	2005012306 D-347/817 10-11-9 14.000 AC				
	(Note: Not to be used on legal documents)				

Date created: 2/20/2020

Last Data Uploaded: 2/19/2020 8:39:48 PM

Developed by

