



Vigo County, IN / City of Terre Haute

Summary - Assessor's Office

Parcel ID 84-09-10-401-003.000-004
Tax ID 103-09-10-401-003
Section Plat 10
Routing Number
Neighborhood 102103 - HONEY CREEK
Property 1335 Springhill Rd
Address Terre Haute, IN 47802
Legal Description 16A OFF W SIDE NW SE EX 2.000 AC NW COR 2005012306 D-347/817 10-11-9
 14.000 AC
 (Note: Not to be used on legal documents)
Acreage 14
Class 101 - Agri Cash grain/general farm
Tax District/Area 004

[View Map](#)



Owner - Auditor's Office

Deeded Owner
[Princeton Mining Company Inc](#)
 650 S ST RD 46
 TERRE HAUTE, IN 47803

Site Description - Assessor's Office

Topography Rolling
Public Utilities
Street or Road Paved
Neigh. Life Cycle Static
Legal Acres 14
Legal Sq Ft 0

Land - Assessor's Office

Land Type	Soil ID	Actual Front	Acreage	Effect. Front	Effect. Depth	Prod Factor	Depth Factor	Meas Sq Ft	Base Rate	Adj Rate	Extended Value	Influ. Factor	Value
HOMESITE			1.000			1.00	1.00		19,383.00	19,383.00	19,380.00	L 6%	20,540.00
TILLABLE LAND	Tp		4.500			1.02			1,560.00	1,591.00	7,160.00		7,160.00
TILLABLE LAND	EIB		3.830			0.77			1,560.00	1,201.00	4,600.00		4,600.00
TILLABLE LAND	EIA		1.170			0.77			1,560.00	1,201.00	1,410.00		1,410.00
TILLABLE LAND	Rg		1.170			1.28			1,560.00	1,997.00	2,340.00		2,340.00
TILLABLE LAND	Cr		2.330			1.02			1,560.00	1,591.00	3,710.00		3,710.00

Land Detail Value Sum 39,760.00

Residential Dwellings - Assessor's Office

Card 01			
Residential Dwelling 1			
Occupancy			
Story Height	1.0		
Roofing	Material: Asphalt shingles		
Attic	None		
Basement Type	Full		
Basement Rec Room	None		
Finished Rooms	5		
Bedrooms	2		
Family Rooms	0		
Dining Rooms	0		
Full Baths	1; 3-Fixt.		
Half Baths	0; 0-Fixt.		
4 Fixture Baths	0; 0-Fixt.		
5 Fixture Baths	0; 0-Fixt.		
Kitchen Sinks	1; 1-Fixt.		
Water Heaters	1; 1-Fixt.		
Central Air	Yes		
Primary Heat	Central Warm Air		
Extra Fixtures	0		
Total Fixtures	5		
Fireplace	No		
Features	None		
Porchs and Decks	Conventional Canopy 288		
	Open Masonry Porch 198		
Yd Item/Spc Fture/Outbldg	BRICK 462 SF		
	BRICK UTILITY SHED 168 SF		
	WOOD FRAME 288 SF		
Last Updated	10/25/2003		
Construction	Floor	Base Area (sf)	Fin. Area (sf)
	1.0	1222	1222
Concrete block	B	1222	0
	Total	2444	1222

Improvements - Assessor's Office

Card 01

ID	Use	Stry Hgt	Const Type	Grade	Year Const	Eff Year	Cond	Base Rate	Features	Adj Rate	Size/ Area	Cost Value	Phys Depr	Obsol Depr	Mrkt Adj	% Comp	Value
D	DWELL	1		C-1	1954	1954	AV	0.00		0	1222	126160	42	0	106	100	77600
G01	ATTGAR		BRICK		0	0	AV	28.86		28.86	22 x 21	13330	0	0	100	100	0
02	UTLSHED		BRICK	D	1954	1954	F	49.02		36.47	12 x 14	6130	70	0	106	100	2000
03	CNPY/		WOOD FRAME	D	1990	1990	AV	0.00		0	12 x 24	0	0	0	106	0	100

Transfer History - Assessor's Office

Date	Owner 1	Owner 2	Book & Page	Amount
7/21/2005	ENNEN HERMAN C JR & VIRGINIA			\$680,000

Valuation - Assessor's Office

Assessment Year		01/01/2019	01/01/2018	01/01/2017	01/01/2016	03/01/2015
Reason for Change		ANN ADJ	ANN ADJ	ANN ADJ	ANN ADJ	ANN ADJ
VALUATION	Land	\$39,800	\$39,800	\$42,600	\$43,500	\$44,600
(Assessed Value)	Improvements	\$79,700	\$77,400	\$75,300	\$73,800	\$72,200
	Total	\$119,500	\$117,200	\$117,900	\$117,300	\$116,800
VALUATION	Land	\$39,800	\$39,800	\$42,600	\$43,500	\$44,600
(True Tax Value)	Improvements	\$79,700	\$77,400	\$75,300	\$73,800	\$72,200
	Total	\$119,500	\$117,200	\$117,900	\$117,300	\$116,800

Charges (2012-2018) - Auditor's Office

Delinquent payments made after the fall due date will still show due in the year they were originally assessed. If paid, payment will show in the next tax year.

Detail:

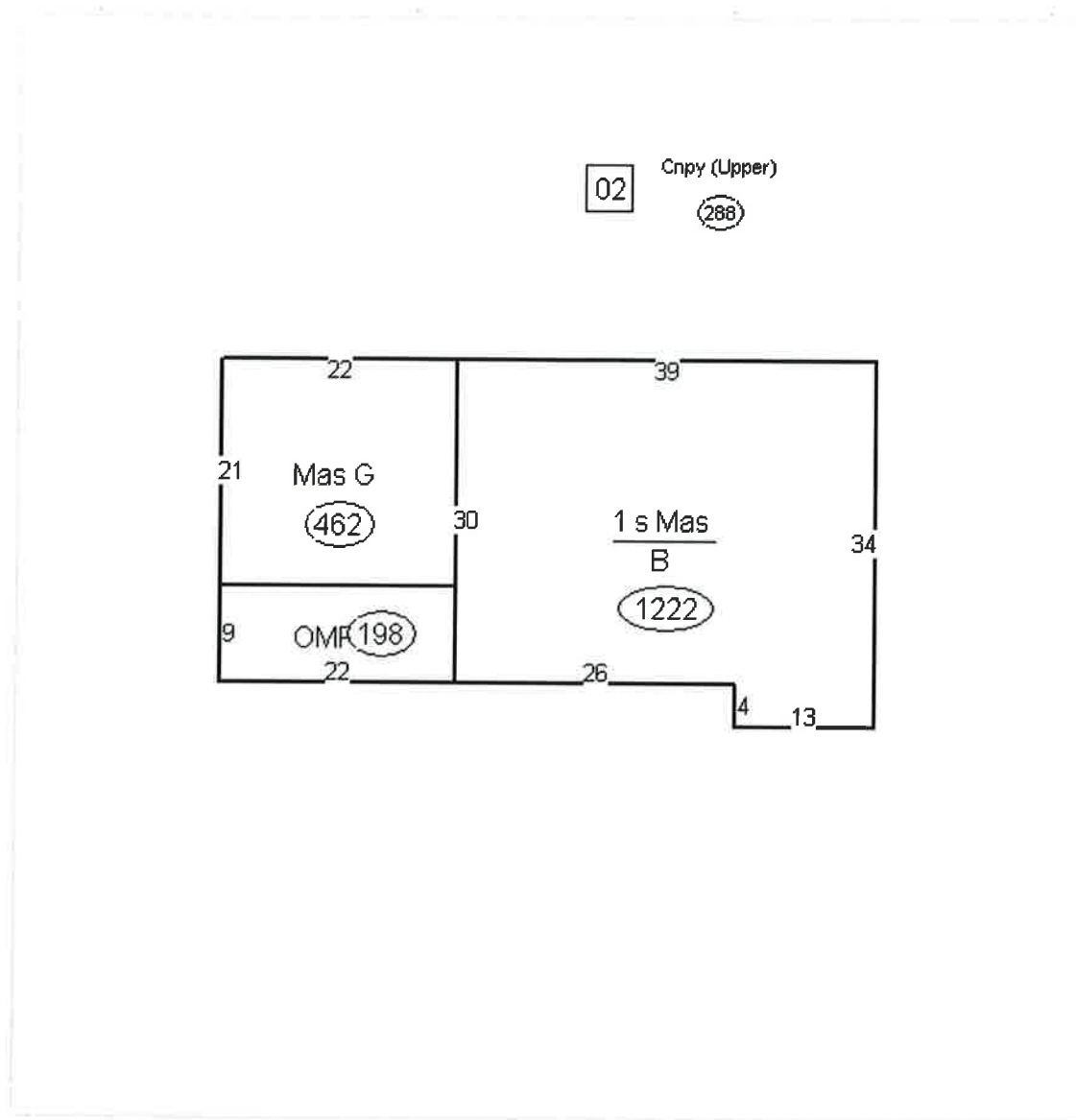
Tax Year	Type	Category	Description	Amount	Bal Due
2018 Pay 2019	Property Tax Detail	Tax	1st Installment Tax	\$1,176.28	\$0.00
2018 Pay 2019	Special Assessment Detail	Tax	HONEY CREEK CONSERVANCY 1st Installment Tax	\$74.60	\$0.00
2018 Pay 2019	Property Tax Detail	Tax	2nd Installment Tax	\$1,176.28	\$0.00
2018 Pay 2019	Special Assessment Detail	Tax	HONEY CREEK CONSERVANCY 2nd Installment Tax	\$74.60	\$0.00
2017 Pay 2018	Property Tax Detail	Tax	1st Installment Tax	\$1,182.49	

2017 Pay 2018	Special Assessment Detail	Tax	HONEY CREEK CONSERVANCY 1st Installment Tax	\$137.47
2017 Pay 2018	Property Tax Detail	Tax	2nd Installment Tax	\$1,182.49
2017 Pay 2018	Special Assessment Detail	Tax	HONEY CREEK CONSERVANCY 2nd Installment Tax	\$137.47
2016 Pay 2017	Property Tax Detail	Tax	1st Installment Tax	\$1,178.14
2016 Pay 2017	Special Assessment Detail	Tax	HONEY CREEK CONSERVANCY 1st Installment Tax	\$137.83
2016 Pay 2017	Property Tax Detail	Tax	2nd Installment Tax	\$1,178.14
2016 Pay 2017	Special Assessment Detail	Tax	HONEY CREEK CONSERVANCY 2nd Installment Tax	\$137.83
2015 Pay 2016	Property Tax Detail	Tax	1st Installment Tax	\$1,172.36
2015 Pay 2016	Special Assessment Detail	Tax	HONEY CREEK CONSERVANCY 1st Installment Tax	\$129.18
2015 Pay 2016	Property Tax Detail	Tax	2nd Installment Tax	\$1,172.36
2015 Pay 2016	Special Assessment Detail	Tax	HONEY CREEK CONSERVANCY 2nd Installment Tax	\$129.18
2014 Pay 2015	Property Tax Detail	Tax	1st Installment Tax	\$1,420.46
2014 Pay 2015	Special Assessment Detail	Tax	HONEY CREEK CONSERVANCY 1st Installment Tax	\$161.15
2014 Pay 2015	Property Tax Detail	Tax	2nd Installment Tax	\$1,420.46
2014 Pay 2015	Special Assessment Detail	Tax	HONEY CREEK CONSERVANCY 2nd Installment Tax	\$161.15
2013 Pay 2014	Property Tax Detail	Tax	1st Installment Tax	\$1,369.45
2013 Pay 2014	Special Assessment Detail	Tax	HONEY CREEK CONSERVANCY 1st Installment Tax	\$90.10
2013 Pay 2014	Property Tax Detail	Tax	2nd Installment Tax	\$1,369.45
2013 Pay 2014	Special Assessment Detail	Tax	HONEY CREEK CONSERVANCY 2nd Installment Tax	\$90.10
2012 Pay 2013	Property Tax Detail	Tax	1st Installment Tax	\$1,345.32
2012 Pay 2013	Special Assessment Detail	Tax	HONEY CREEK CONSERVANCY 1st Installment Tax	\$88.64
2012 Pay 2013	Property Tax Detail	Tax	2nd Installment Tax	\$1,345.32
2012 Pay 2013	Special Assessment Detail	Tax	HONEY CREEK CONSERVANCY 2nd Installment Tax	\$88.64
2011 Pay 2012	Special Assessment Detail	Tax	HONEY CREEK CONSERVANCY 1st Installment Tax	\$104.90
2011 Pay 2012	Special Assessment Detail	Tax	HONEY CREEK CONSERVANCY 2nd Installment Tax	\$104.90

Total:

Tax Year	Amount	Bal Due
2018 Pay 2019	\$2,501.76	\$0.00
2017 Pay 2018	\$2,639.92	
2016 Pay 2017	\$2,631.94	
2015 Pay 2016	\$2,603.08	
2014 Pay 2015	\$3,163.22	
2013 Pay 2014	\$2,919.10	
2012 Pay 2013	\$2,867.92	
2011 Pay 2012	\$209.80	

Photos - Assessor's Office**Sketches - Assessor's Office**

**Map**

No data available for the following modules: Farm Land Computations - Assessor's Office, Transfer Recording - Auditor's Office, Homestead Allocations - Assessor's Office, Deductions - Auditor's Office, Payments (2010-2018) - Treasurer's Office, Exemptions - Auditor's Office.

The information on this web site is derived from data provided by the City of Terre Haute, Indiana. The information is provided "as is" and is not guaranteed to be accurate or complete. The City of Terre Haute, Indiana is not responsible for any errors or omissions in the information provided. The City of Terre Haute, Indiana is not responsible for any damages or losses resulting from the use of the information provided.

[User Privacy Policy](#)
[GDPR Privacy Notice](#)

[Last Data Upload: 2/19/2020, 8:39:48 PM](#)

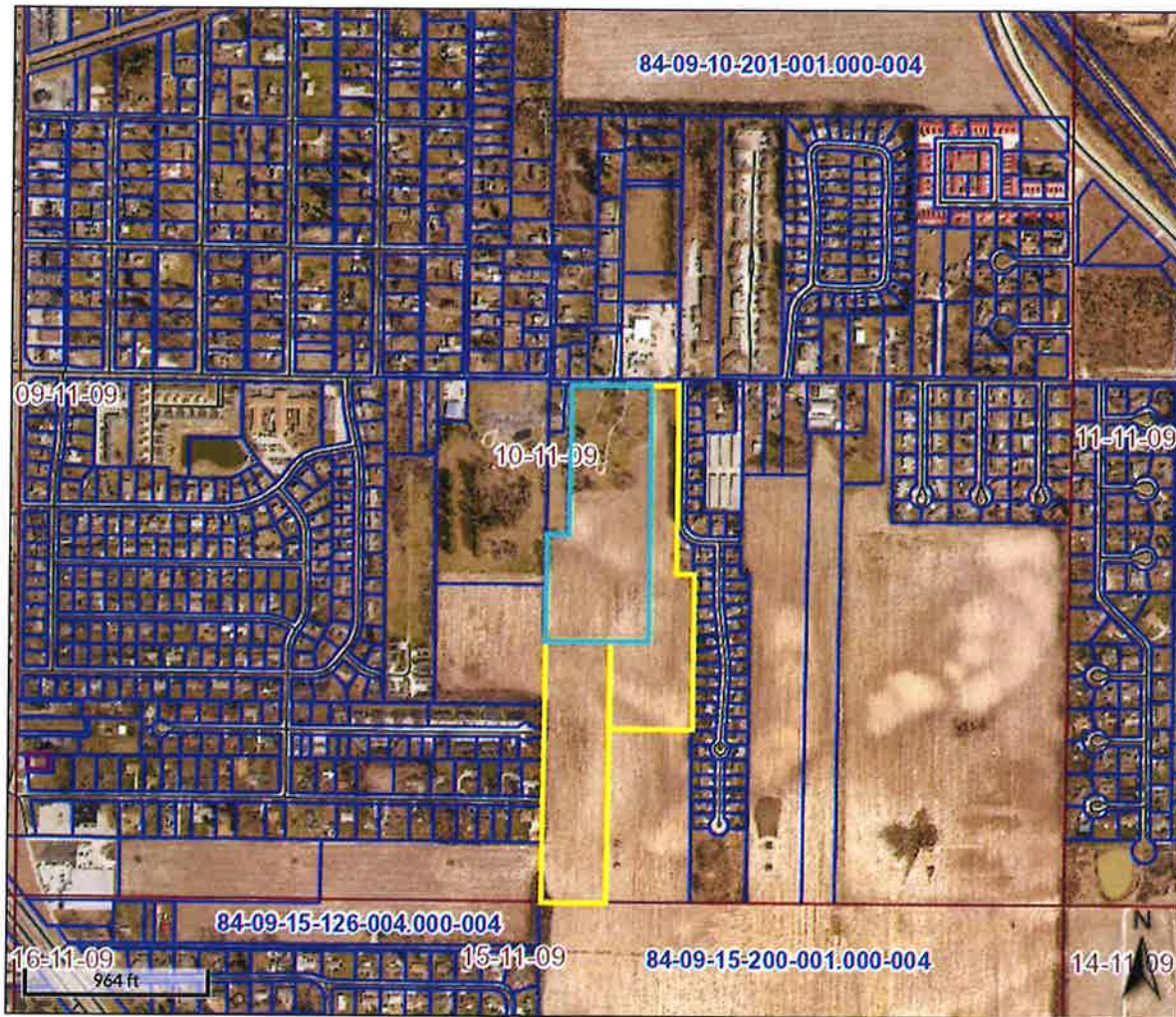
Developed by
 **Schneider**
GEOSPATIAL

[Version 2.3.41](#)

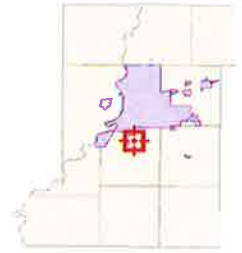


BeaconTM

Vigo County, IN / City of Terre Haute



Overview



Legend

- Corporate Limits
- Political Township
- Sections
- Blocks
- Parcels
- Road Centerlines
- 2019 Sales

Parcel ID	84-09-10-401-003.000-004	Alternate ID	103-09-10-401-003	Owner Address	PRINCETON MINING COMPANY INC
Sec/Twp/Rng	10	Class	Agri Cash grain/general farm		650 S ST RD 46
Property Address	1335 SPRINGHILL RD	Acreage	14		TERRE HAUTE, IN 47803
	TERRE HAUTE				
Neighborhood	102103 - HONEY CREEK				
District	004				
Brief Tax Description	16A OFF W SIDE NW SE EX 2.000 AC NW COR				
	2005012306 D-347/817 10-11-9 14.000 AC				
	(Note: Not to be used on legal documents)				

Date created: 2/20/2020

Last Data Uploaded: 2/19/2020 8:39:48 PM

Developed by  **Schneider**
GEOSPATIAL