



Source: USDA Farm Service Agency - 2014 or 2013 (Ohio) NAIP imagery; IDHS Nov 2013 or Dynamap 2008 road names



CLU	Acres	HEL	Contract	Prac	Yr	C	I
3	6.48	N					Y

USDA FSA maps are for FSA program administration only. This map does not represent a legal survey or reflect actual ownership; rather it depicts information provided directly from the producer and/or NAIP imagery. The producer accepts the data 'as is' and assumes all risks associated with its use. The USDA Farm Service Agency assumes no responsibility for actual or consequential damage incurred as a result of any user's reliance on this data outside FSA programs. Wetland identifiers do not represent the size, shape, or specific determination of the area. Refer to your original determination (CPA-026 and attached maps) for exact boundaries and determinations or contact NRCS.

USDA Farm 5115 Tract 1847
Administered by: Clay County, Indiana

Map prepared on: 4/9/2015
194.11 Tract acres
61.3 Cropland acres
0 CRP acres

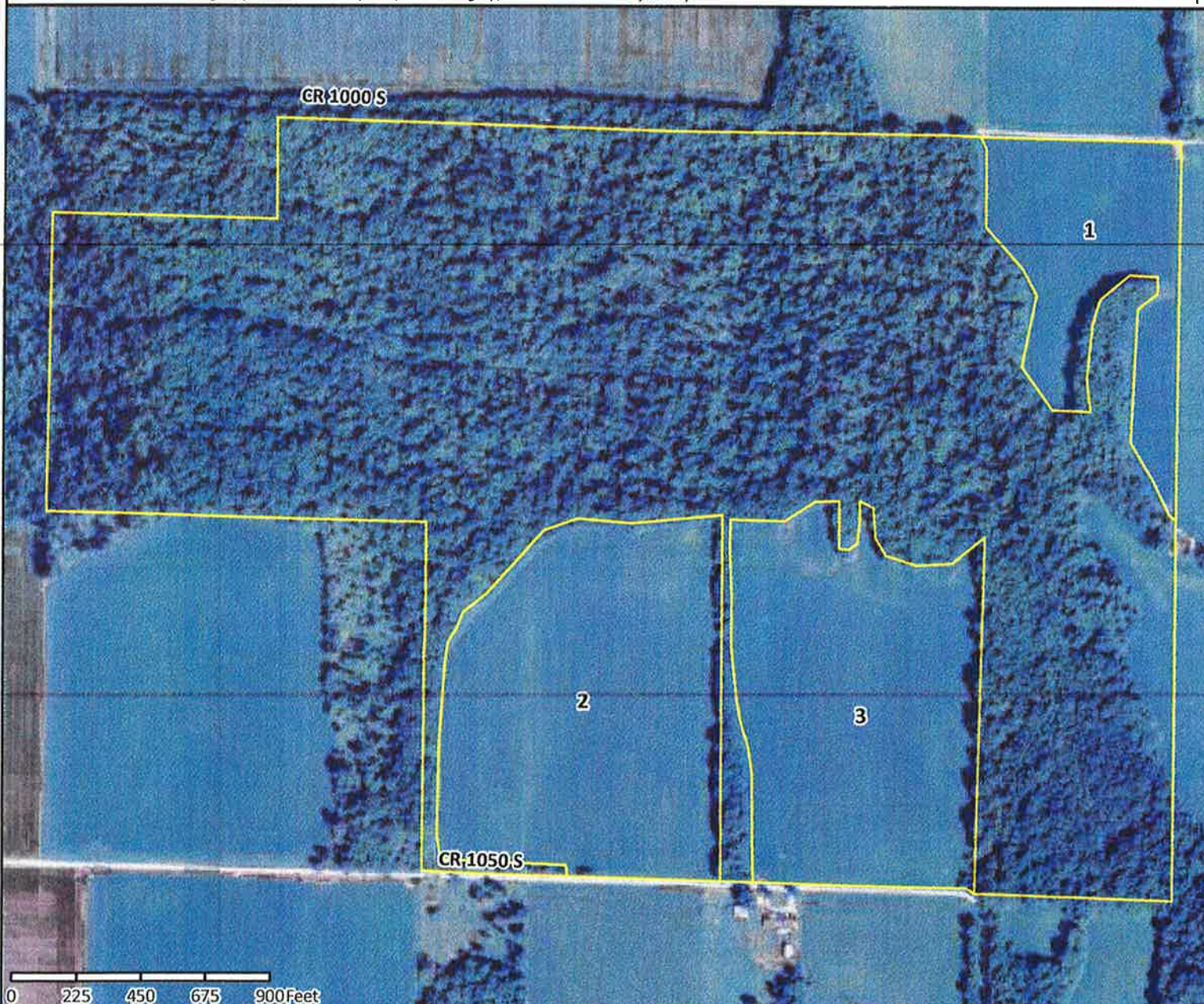
CRP
CLU

Wetland Determination Identifiers:

- Restricted Use
- ▼ Limited Restrictions
- Exempt from Conservation Compliance Provisions



Source: USDA Farm Service Agency - 2014 or 2013 (Ohio) NAIP imagery; IDHS Nov 2013 or Dynamap 2008 road names



CLU	Acres	HEL	Contract	Prac	Yr	C	I
1	11.88	N				Y	
2	25.84	N				Y	
3	23.58	N				Y	

USDA FSA maps are for FSA program administration only. This map does not represent a legal survey or reflect actual ownership; rather it depicts information provided directly from the producer and/or NAIP imagery. The producer accepts the data 'as is' and assumes all risks associated with its use. The USDA Farm Service Agency assumes no responsibility for actual or consequential damage incurred as a result of any user's reliance on this data outside FSA programs. Wetland identifiers do not represent the size, shape, or specific determination of the area. Refer to your original determination (CPA-026 and attached maps) for exact boundaries and determinations or contact NRCS.