



## Summary - Assessor's Office

Parcel ID 84-10-15-400-009,000-018  
 Tax ID 113-10-15-400-009  
 Section Plat 15  
 Routing Number  
 Neighborhood 113102 - RILEY  
 Property Address 8686 S State Road 46  
 Terre Haute, IN 47802  
 Legal Description B & D DECKER ESTATES AMENDED PLAT .72 AC SUBJ HWY RTW 2004012377 PL-32/78 15-11-8 LOT 1 10.760 AC  
 (Note: Not to be used on legal documents)  
 Acreage 10.76  
 Class 100 - Agri Vacant land  
 Tax District/Area 018 - RILEY

[View Map](#)

## Owner - Auditor's Office

Deeded Owner  
 Decker Shawn W  
 6631 LOUISVILLE RD  
 TERRE HAUTE, IN 47802

## Site Description - Assessor's Office

Topography  
 Public Utilities  
 Street or Road  
 Neigh. Life Cycle  
 Legal Acres 10.76  
 Legal Sq Ft 0

## Land - Assessor's Office

Land Type	Soil ID	Actual Front	Acreage	Effect. Front	Effect. Depth	Prod Factor	Depth Factor	Meas Sq Ft	Base Rate	Adj Rate	Extended Value	Influ. Factor	Value
PUBLIC ROAD/ROW	Sh		0.720			1.00			1,610.00	1,610.00	1,160.00	0 -100%	0.00
TILLABLE LAND	IvA		1.760			1.15			1,610.00	1,851.00	3,260.00		3,260.00
TILLABLE LAND	IvB		3.000			1.15			1,610.00	1,851.00	5,550.00		5,550.00
TILLABLE LAND	AvB2		3.780			0.81			1,610.00	1,304.00	4,930.00		4,930.00
WOODLAND	AvB2		1.500			0.81			1,610.00	1,304.00	1,960.00	0 -80%	390.00

Land Detail Value Sum 14,130.00

## Transfer Recording - Auditor's Office

Transfer #	Date	Type	Instrument	Instr #	Book	Page	From	To
61724	10/15/2018	Change Ownership	Warranty Deed	2018011072			DECKER WILLIAM J & RETA J	DECKER SHAWN W
7274	4/4/2008	Change Description	Plat	2008005239			DECKER WILLIAM J & RETA J	DECKER WILLIAM J & RETA J

## Valuation - Assessor's Office

Assessment Year		01/01/2018	01/01/2017	01/01/2016	03/01/2015	03/01/2014
Reason for Change		ANN ADJ	ANN ADJ	ANN ADJ	ANN ADJ	ANN ADJ
VALUATION	Land	\$14,100	\$16,300	\$17,200	\$18,000	\$18,000
(Assessed Value)	Improvements	\$0	\$0	\$0	\$0	\$0
	Total	\$14,100	\$16,300	\$17,200	\$18,000	\$18,000
VALUATION	Land	\$14,100	\$16,300	\$17,200	\$18,000	\$18,000
(True Tax Value)	Improvements	\$0	\$0	\$0	\$0	\$0
	Total	\$14,100	\$16,300	\$17,200	\$18,000	\$18,000

## Charges (2012-2017) - Auditor's Office

Delinquent payments made after the fall due date will still show due in the year they were originally assessed. If paid, payment will show in the next tax year.

Detail:

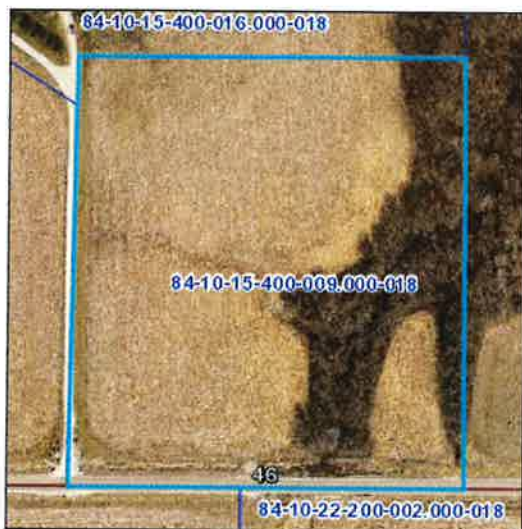
Tax Year	Type	Category	Description	Amount	Bal Due
2017 Pay 2018	Property Tax Detail	Tax	1st Installment Tax	\$163.00	\$0.00
2017 Pay 2018	Property Tax Detail	Tax	2nd Installment Tax	\$163.00	\$0.00
2016 Pay 2017	Property Tax Detail	Tax	1st Installment Tax	\$172.00	

Tax Year	Type	Category	Description	Amount	Bal Due
2016 Pay 2017	Property Tax Detail	Tax	2nd Installment Tax	\$172.00	
2015 Pay 2016	Property Tax Detail	Tax	1st Installment Tax	\$180.00	
2015 Pay 2016	Property Tax Detail	Tax	2nd Installment Tax	\$180.00	
2014 Pay 2015	Property Tax Detail	Tax	1st Installment Tax	\$180.00	
2014 Pay 2015	Property Tax Detail	Tax	2nd Installment Tax	\$180.00	
2013 Pay 2014	Property Tax Detail	Tax	1st Installment Tax	\$155.00	
2013 Pay 2014	Property Tax Detail	Tax	2nd Installment Tax	\$155.00	
2012 Pay 2013	Property Tax Detail	Tax	1st Installment Tax	\$143.00	
2012 Pay 2013	Property Tax Detail	Tax	2nd Installment Tax	\$143.00	

**Total:**

Tax Year	Amount	Bal Due
2017 Pay 2018	\$326.00	\$0.00
2016 Pay 2017	\$344.00	
2015 Pay 2016	\$360.00	
2014 Pay 2015	\$360.00	
2013 Pay 2014	\$310.00	
2012 Pay 2013	\$286.00	

**Map**



No data available for the following modules: Farm Land Computations - Assessor's Office, Residential Dwellings - Assessor's Office, Improvements - Assessor's Office, Transfer History - Assessor's Office, Homestead Allocations - Assessor's Office, Deductions - Auditor's Office, Payments (2010-2016) - Treasurer's Office, Exemptions - Auditor's Office, Photos - Assessor's Office, Sketches - Assessor's Office.

The information in this web site represents current data from a working file which is updated continuously. Information is believed reliable, but its accuracy cannot be guaranteed. No warranty, expressed or implied, is provided for the data herein, or its use.

Last Data Upload: 11/5/2018, 7:19:40 PM

Developed by  
 **Schneider**  
 GEOSPATIAL