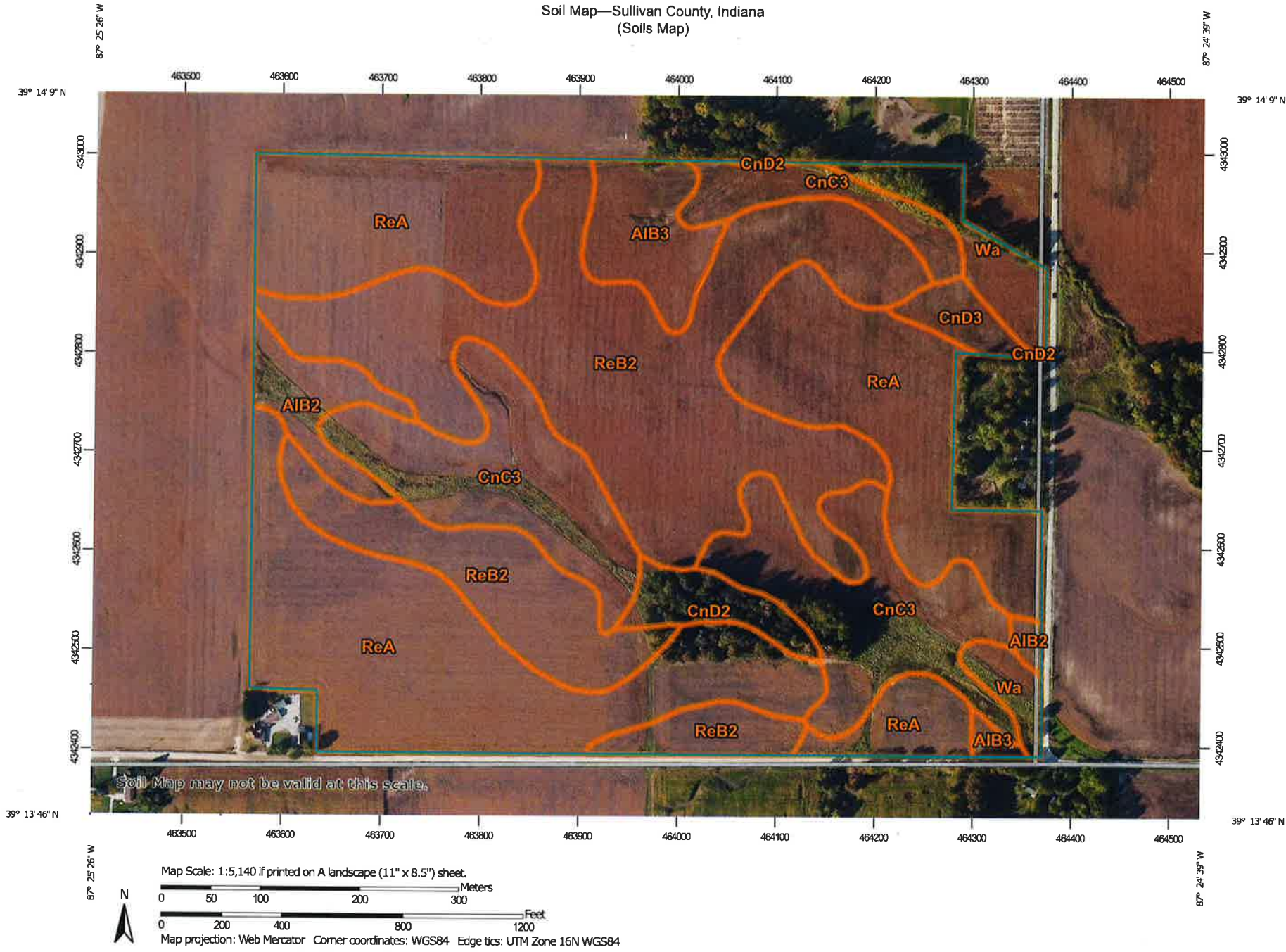


Soil Map—Sullivan County, Indiana  
(Soils Map)



Soil Map—Sullivan County, Indiana  
(Soils Map)

MAP LEGEND

<b>Area of Interest (AOI)</b>		Spoil Area
Area of Interest (AOI)		Stony Spot
<b>Soils</b>		Very Stony Spot
Soil Map Unit Polygons		Wet Spot
Soil Map Unit Lines		Other
Soil Map Unit Points		Special Line Features
<b>Special Point Features</b>		<b>Water Features</b>
Blowout		Streams and Canals
Borrow Pit		<b>Transportation</b>
Clay Spot		Rails
Closed Depression		Interstate Highways
Gravel Pit		US Routes
Gravelly Spot		Major Roads
Landfill		Local Roads
Lava Flow		<b>Background</b>
Marsh or swamp		Aerial Photography
Mine or Quarry		
Miscellaneous Water		
Perennial Water		
Rock Outcrop		
Saline Spot		
Sandy Spot		
Severely Eroded Spot		
Sinkhole		
Slide or Slip		
Sodic Spot		

MAP INFORMATION

The soil surveys that comprise your AOI were mapped at 1:15,800.

Warning: Soil Map may not be valid at this scale.

Enlargement of maps beyond the scale of mapping can cause misunderstanding of the detail of mapping and accuracy of soil line placement. The maps do not show the small areas of contrasting soils that could have been shown at a more detailed scale.

Please rely on the bar scale on each map sheet for map measurements.

Source of Map: Natural Resources Conservation Service  
Web Soil Survey URL:  
Coordinate System: Web Mercator (EPSG:3857)

Maps from the Web Soil Survey are based on the Web Mercator projection, which preserves direction and shape but distorts distance and area. A projection that preserves area, such as the Albers equal-area conic projection, should be used if more accurate calculations of distance or area are required.

This product is generated from the USDA-NRCS certified data as of the version date(s) listed below.

Soil Survey Area: Sullivan County, Indiana  
Survey Area Data: Version 21, Sep 7, 2018

Soil map units are labeled (as space allows) for map scales 1:50,000 or larger.

Date(s) aerial images were photographed: Jul 9, 2011—Oct 4, 2011

The orthophoto or other base map on which the soil lines were compiled and digitized probably differs from the background imagery displayed on these maps. As a result, some minor shifting of map unit boundaries may be evident.

Map Unit Legend

Map Unit Symbol	Map Unit Name	Acres in AOI	Percent of AOI
AIB2	Ava silt loam, 2 to 6 percent slopes, eroded	3.2	2.8%
AIB3	Ava silt loam, 2 to 6 percent slopes, severely eroded	4.3	3.8%
CnC3	Cincinnati silt loam, Wabash Lowland, 6 to 12 percent slopes, severely eroded	20.9	18.5%
CnD2	Cincinnati silt loam, 12 to 18 percent slopes, eroded	2.3	2.1%
CnD3	Cincinnati silt loam, 12 to 18 percent slopes, severely eroded	1.4	1.2%
ReA	Reesville silt loam, 0 to 2 percent slopes	41.1	36.3%
ReB2	Reesville silt loam, 2 to 5 percent slopes, eroded	35.8	31.7%
Wa	Wakeland silt loam, 0 to 2 percent slopes, frequently flooded	4.0	3.6%
Totals for Area of Interest		113.1	100.0%